

Enabling LDAPv3 for OS X 10.3 at the University of Michigan

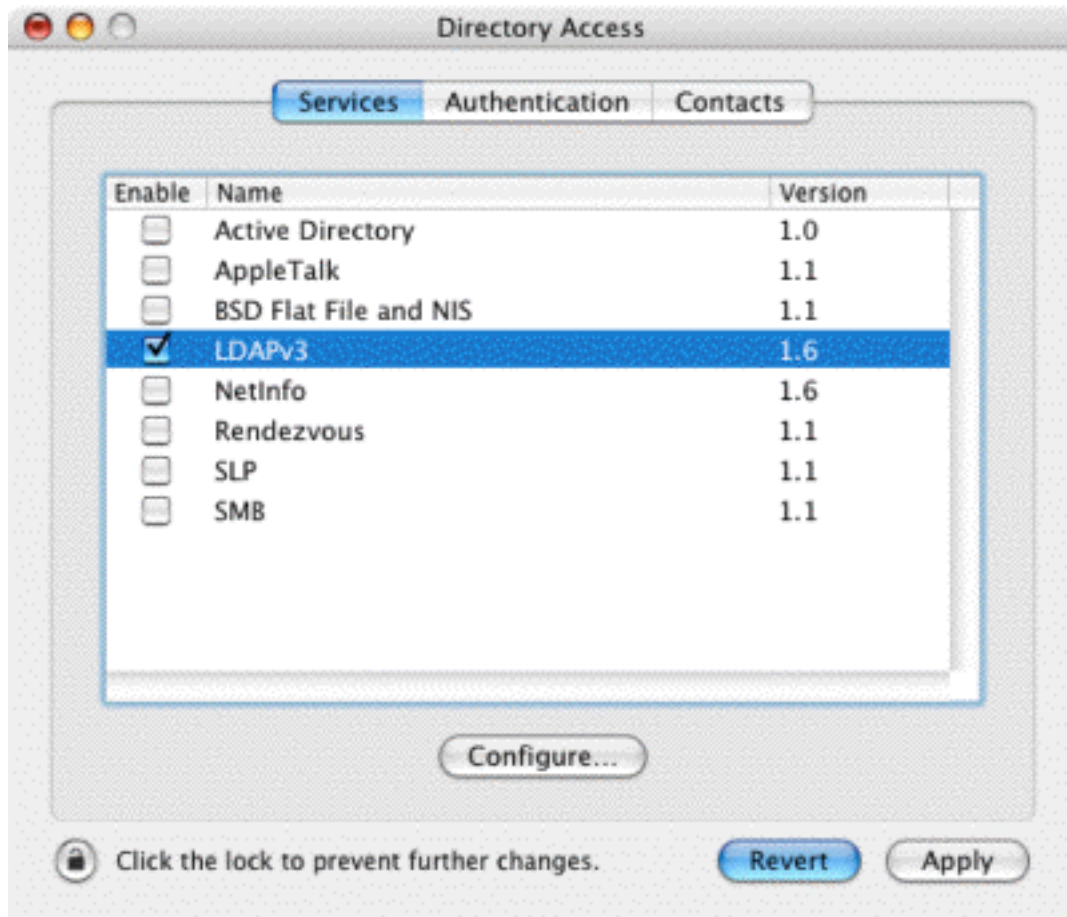
[PDF version of this page](#)

1. Log in to the computer using an account with administrative privileges.
2. Open the **Directory Access** utility from the **Utilities** folder inside the **Applications** folder. You'll need to authenticate by clicking on the lock icon.

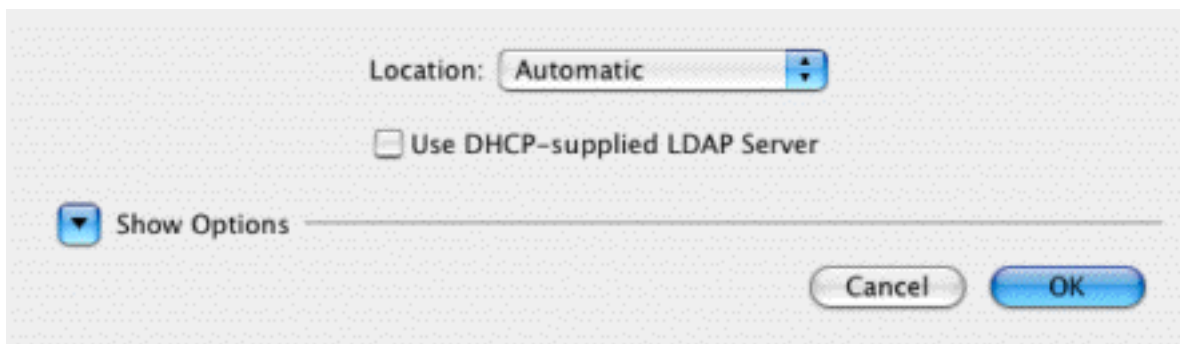




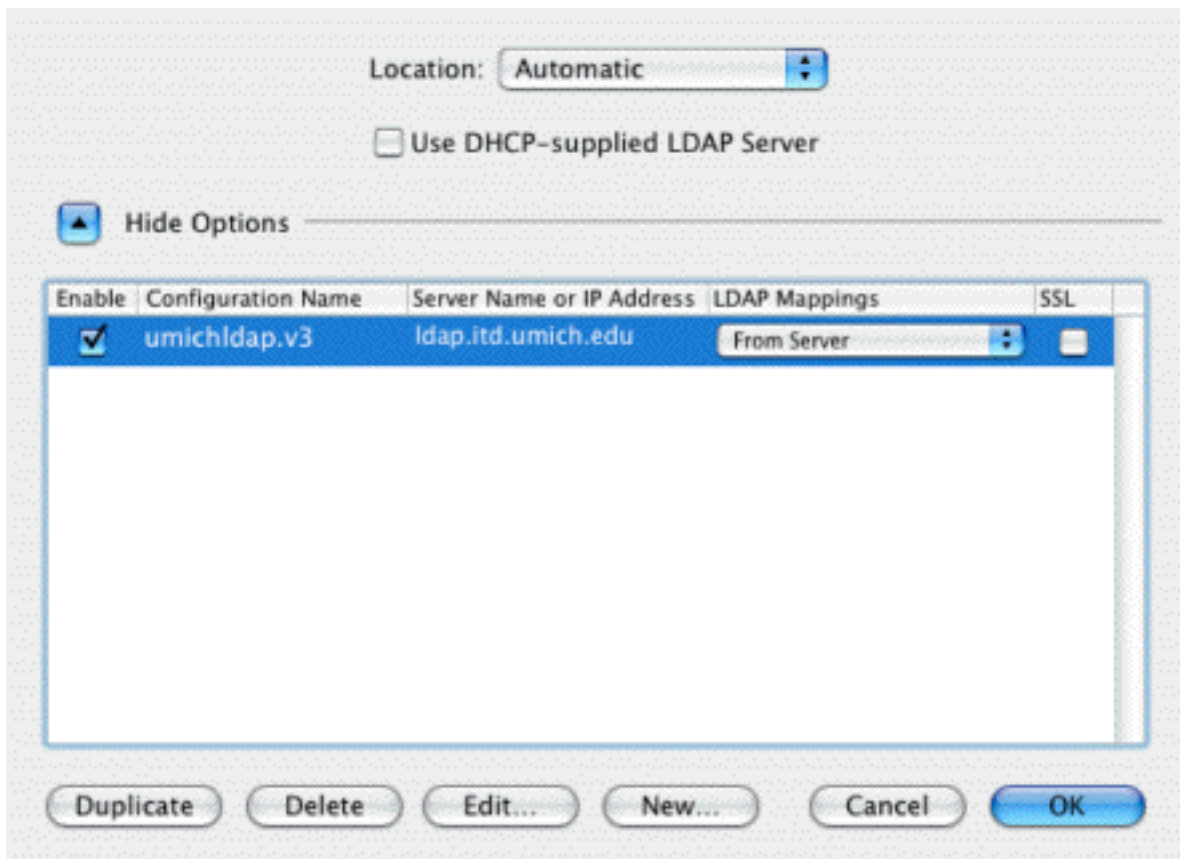
3. **LDAPv3** should already be enabled; if not, check the checkbox. It 's pretty likely that you won't need any of the other services selected, so deselect them now. Select the **LDAPv3** line and click the **Configure...** button.



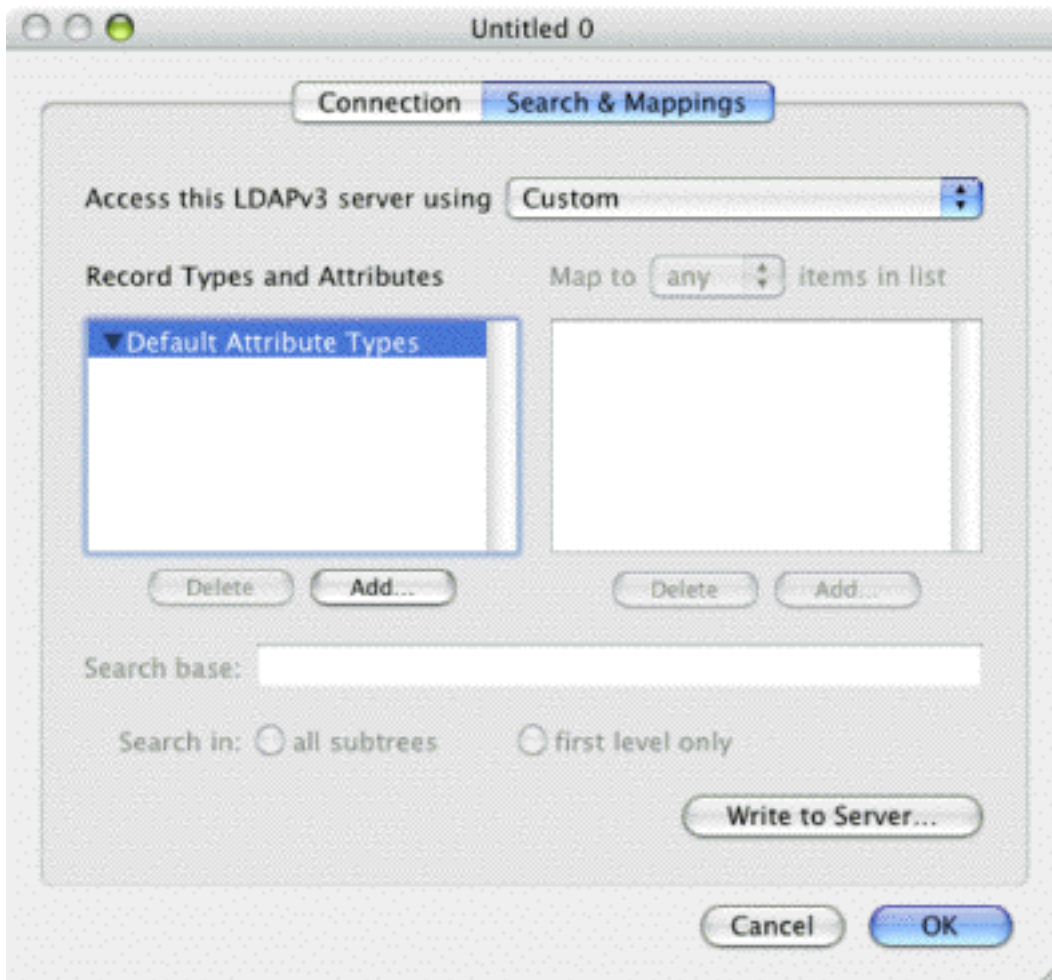
4. Select the location you want to configure, deselect **Use DHCP-supplied LDAP Server**, and click on the **Show Options** button.



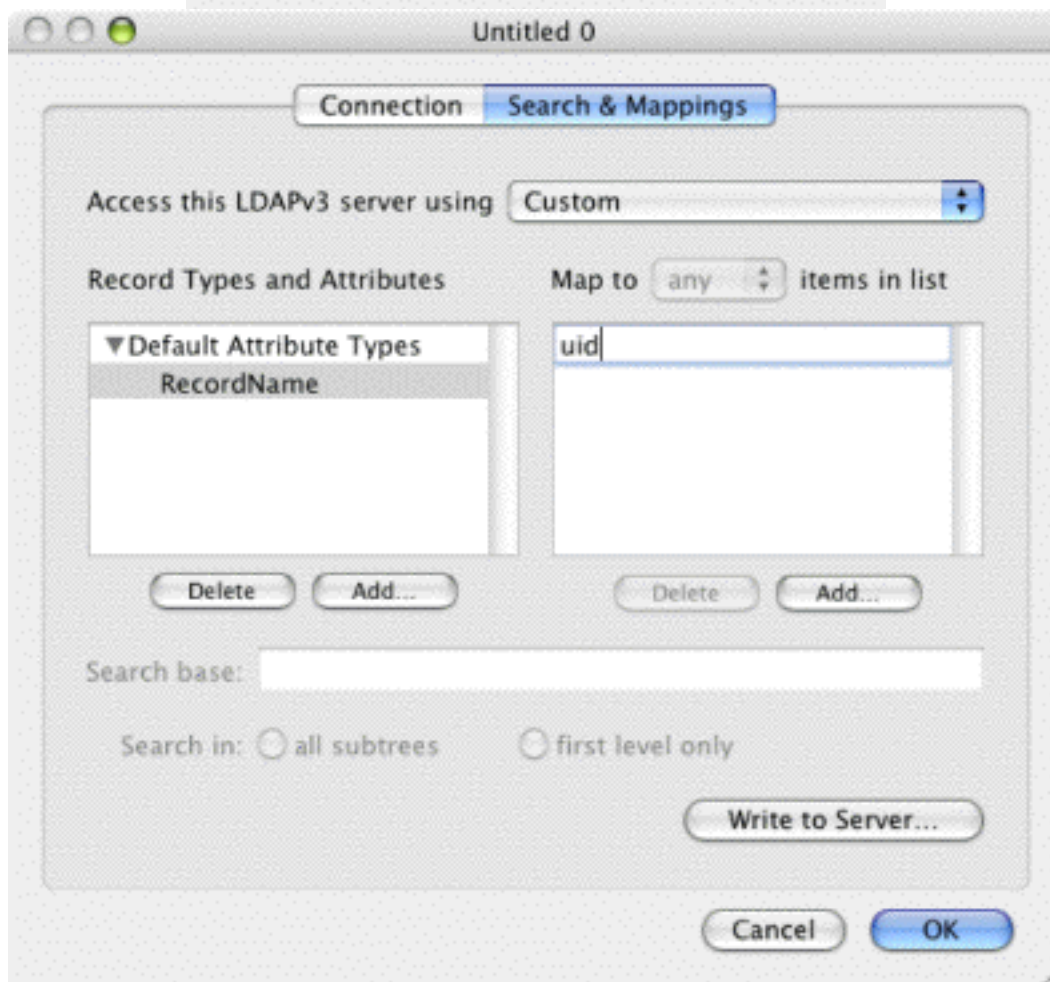
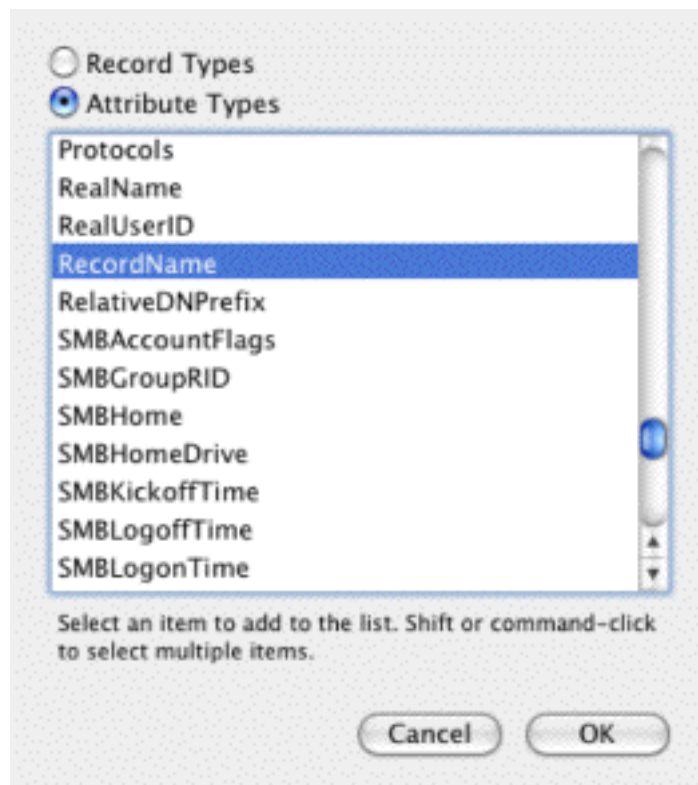
5. Click on the **New...** button. Double-click on **Untitled 0**, and change it to **umichldap.v3**,. Double-click on **unknown.domain.com** and change it to **ldap.itd.umich.edu**. Change the **LDAP Mappings** drop-down menu from **From Server** to **Custom** -- this will automatically open the custom configuration window. Currently, SSL is not supported (it will be soon); so for now, **don't** select the SSL checkbox.



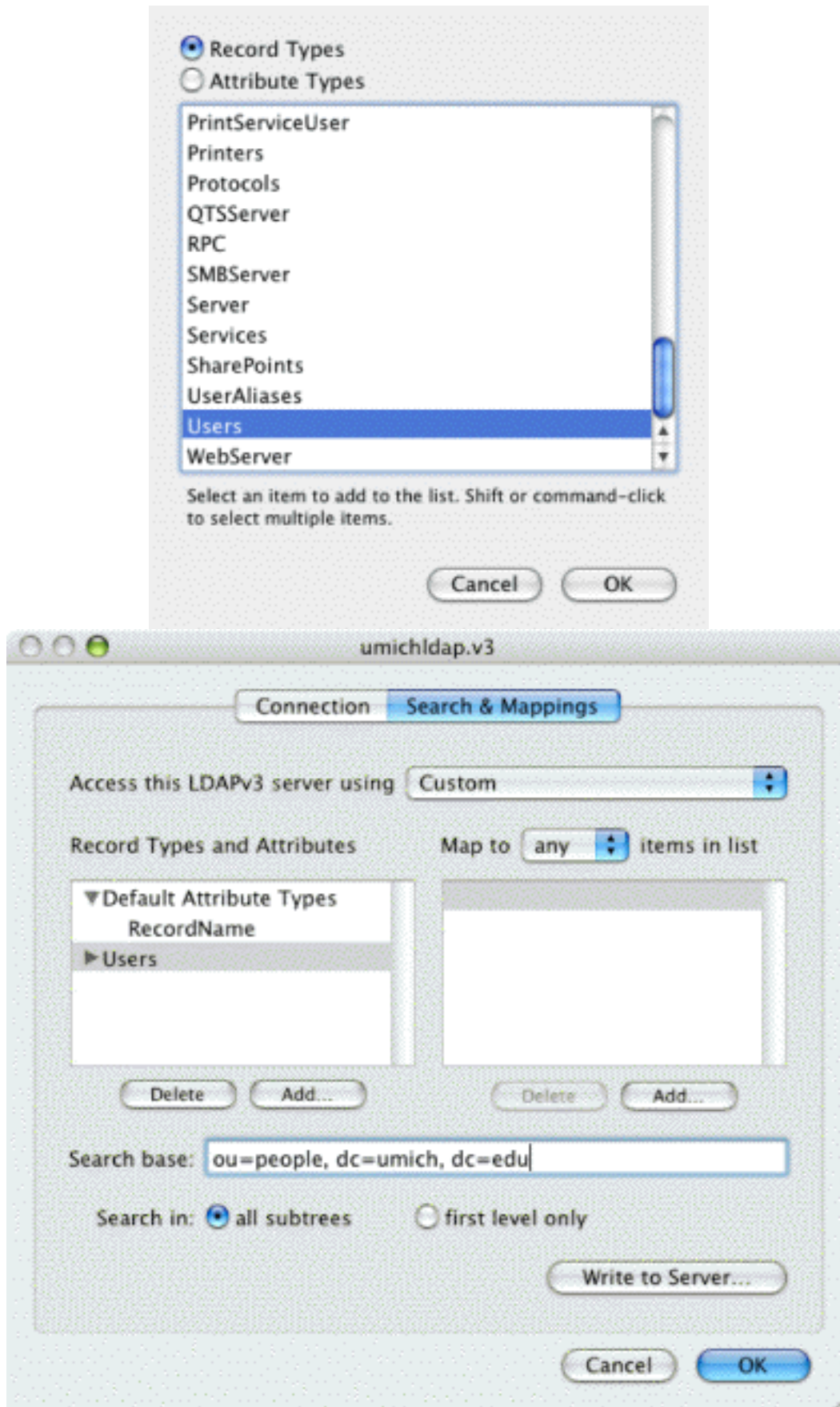
6. Under the **Connection** tab, you shouldn't need to make any changes, so click on the **Search & Mappings** tab. *Unlike* 10.2, you **DO** need to add an Attribute for the **Default Attribute Types**. Under the **Record Types and Attributes** box, click on the **Add** button.



7. Make sure the **Attribute Types** radio button is selected, select **RecordName** and then click the **OK** button. Double-click the top line in the **Map to any items in list** box, and type in **uid**.

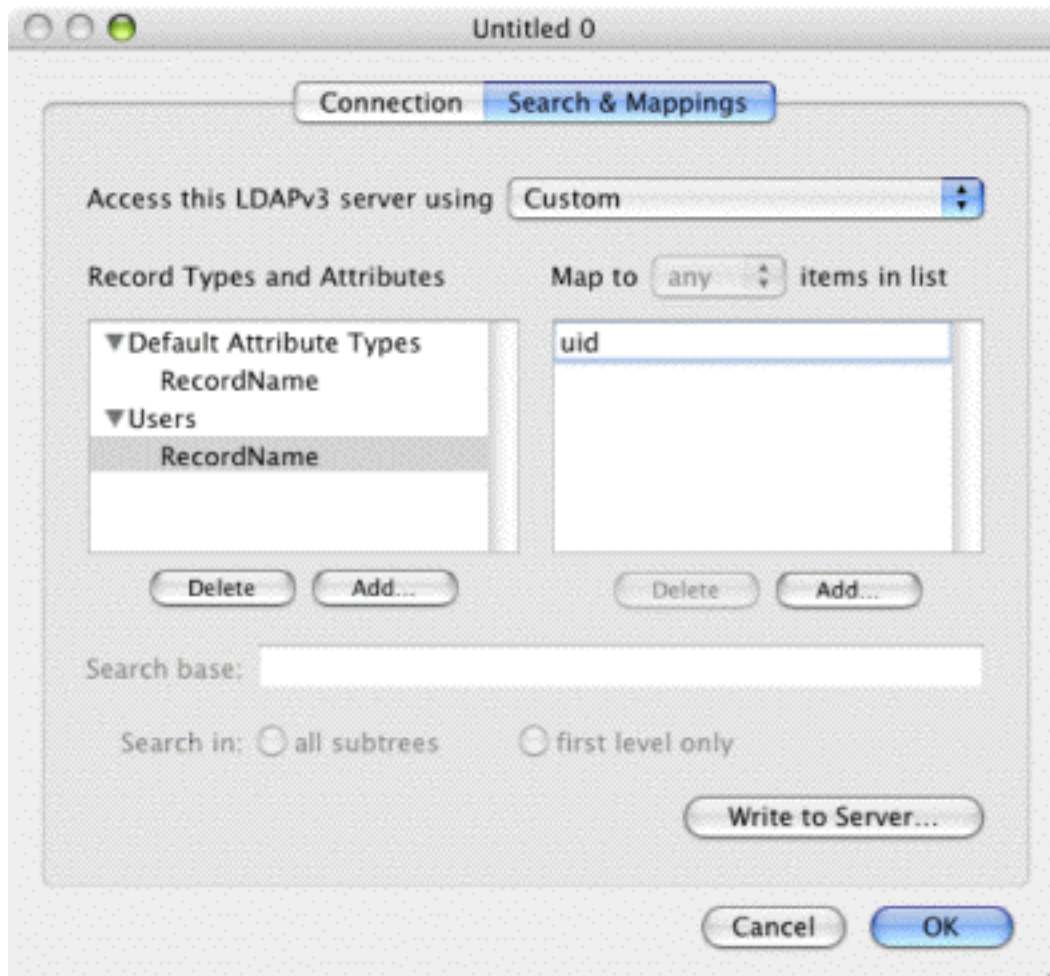


8. Under the **Record Types and Attributes** box, click the **Add...** button again. Make sure the **Record Types** radio button is selected. Select **Users** and then click the **OK** button. Click inside the **Search base** text box. Type in **ou=people, dc=umich, dc=edu** .



9. Back in the **Record Types & Attributes** box, make sure **Users** is selected and click the **Add** button again. Make sure the **Attribute Types** radio button is selected. Select **RecordName**

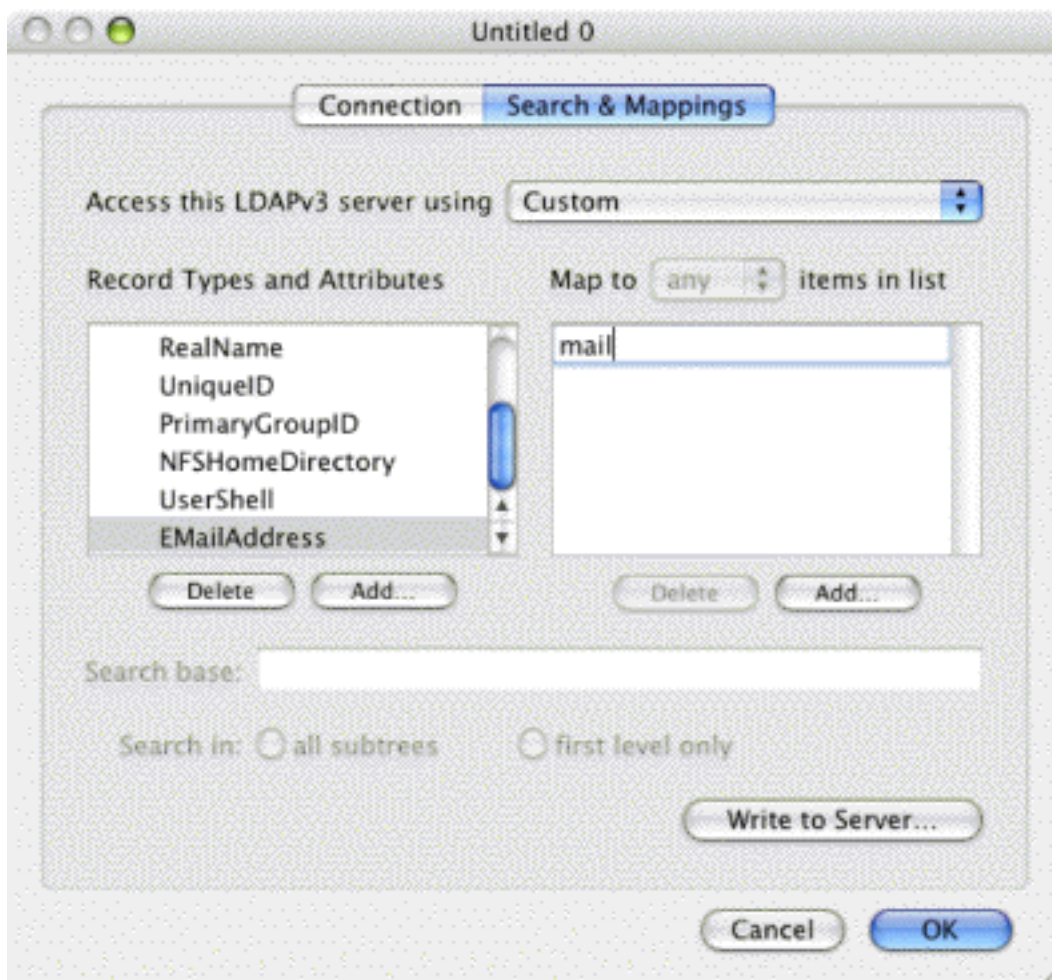
and click the **OK** button. Again, back to the **Map to** box and click the **Add** button. Type in **uid**.

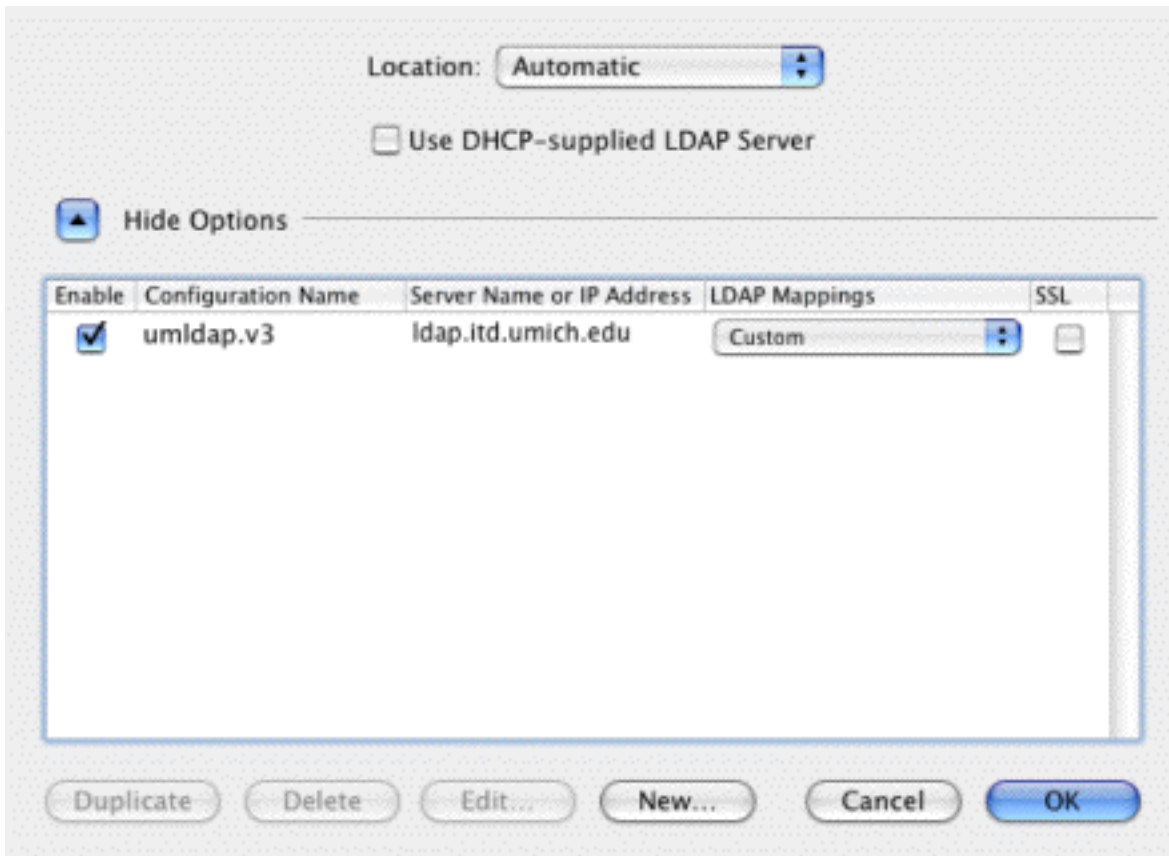



10. Repeat the same steps using the following information:

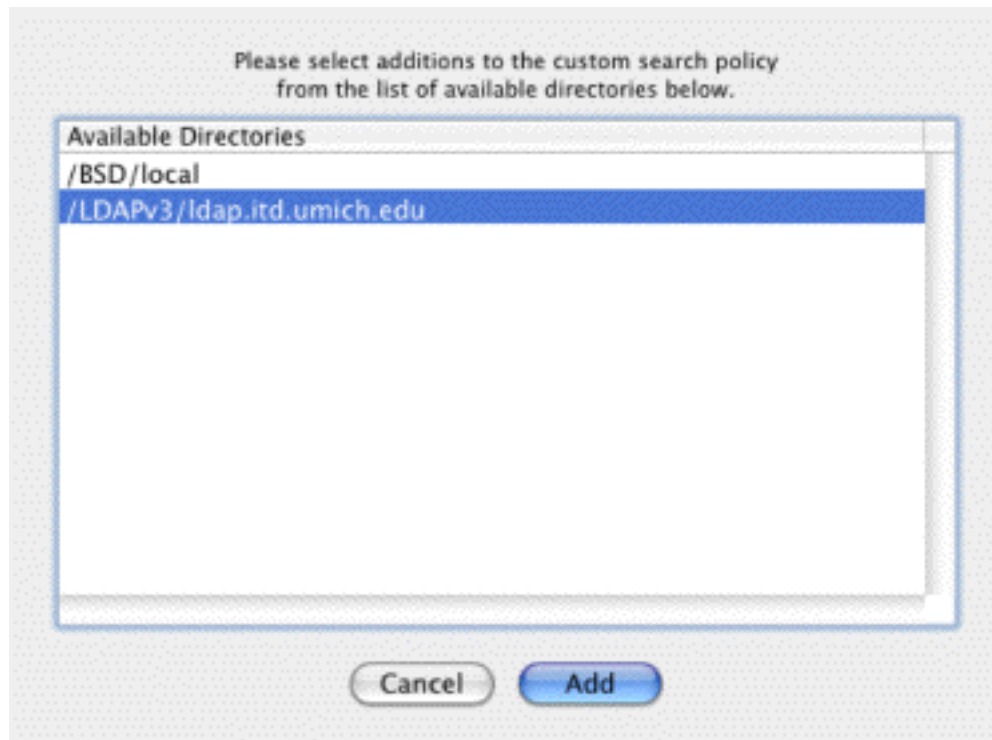
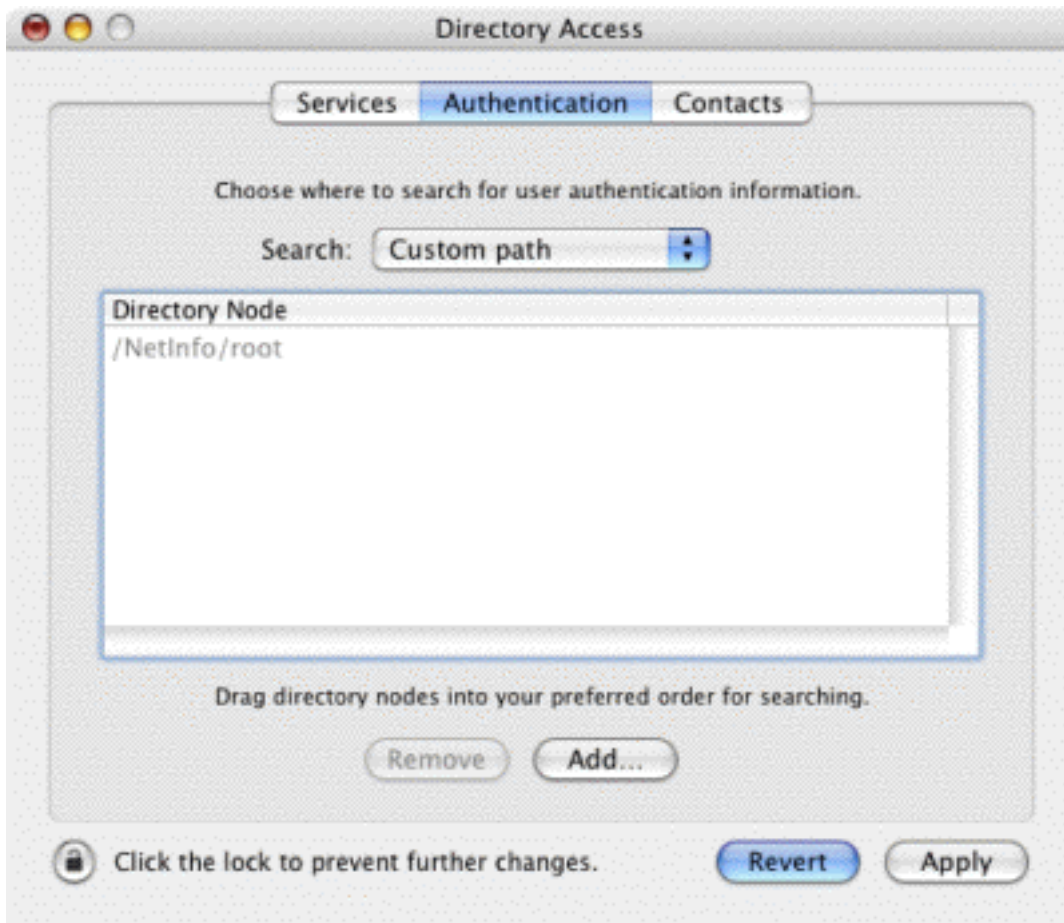
Attribute Type:	Maps to:
RecordName	uid
RealName	cn
UniqueID	uidnumber
PrimaryGroupID	gidnumber
NFSHomeDirectory	homedirectory
UserShell	loginshell
EmailAddress	mail

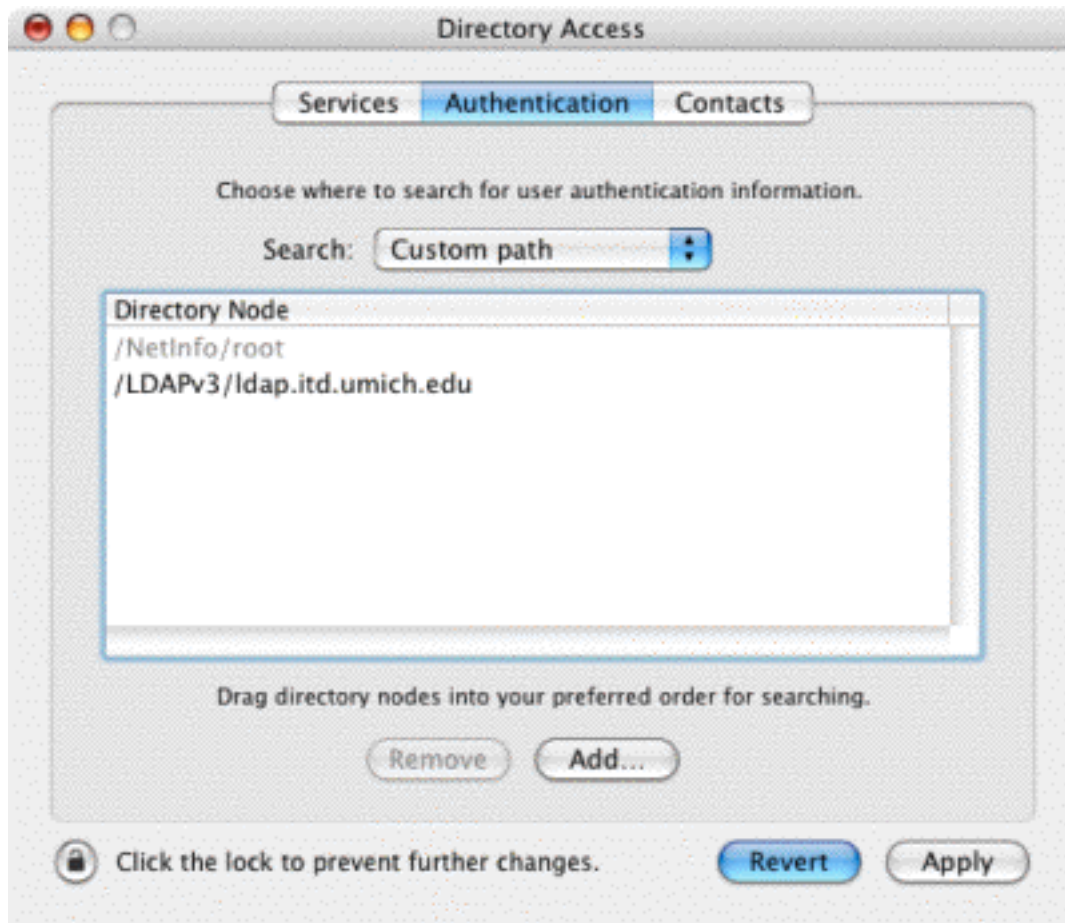
11. When you are finished, click the **OK** button. At the next screen, click the **OK** button there as well.





12. Click on the **Authentication** tab. Change the **Search** drop-down menu from **Automatic** to **Custom path**. You can remove any previous custom paths by selecting them and clicking the **Remove** button. Then click the **Add** button, and select **/LDAPv3/ldap.itd.umich.edu**. Then click the **Add** button. Nothing under the **Contacts** tab needs to be configured, so you can click on the **Apply** button. Click on the red close-window button , **Save** the changes, and you are done!





13. Start the **Terminal** application from the **Utilities** folder in the **Applications** folder.

14. Type `id uniquename` <Enter>, where *uniquename* is a "Michigan Person" who does not have a local user account on the computer. The reply will come back `id: uniquename: No such user` until the changes come through; then you should get the `uid`, `gid`, and `groups` values for that *uniquename*. That indicates that everything is working correctly.

```

/usr/bin/login (tty1)
[localhost:~] jhstew% id wes
id: wes: No such user
[localhost:~] jhstew% id wes
id: wes: No such user
[localhost:~] jhstew% id wes
id: wes: No such user
[localhost:~] jhstew% id wes
id: wes: No such user
[localhost:~] jhstew% id wes
id: wes: No such user
[localhost:~] jhstew% id wes
id: wes: No such user
[localhost:~] jhstew% id wes
id: wes: No such user
[localhost:~] jhstew% id wes
id: wes: No such user
[localhost:~] jhstew% id wes
uid=5386(wes) gid=10 groups=10

```

Additional sites for your UM OS X Configuring pleasure:

<http://www.umich.edu/~arosenbl> has pages on configuring both MIT Kerberos and OpenAFS

http://www.itd.umich.edu/macros/macosex_more.html The "more" page has all the good stuff.

Well, more is **MORE** , isn't it?

Reloading a lab? You need Radmind... <http://rsug.itd.umich.edu/software/radmind/macosex.html>

Running logout scripts, or other scripts that want a gui? <http://rsug.itd.umich.edu/software/ihook>

Setting up a lab in the first place? <http://www.macoslabs.org> is where you need to go. No,

trust me; you need to go there.

How about a free **secure** ftp client? <http://rsug.itd.umich.edu/software/fugu>