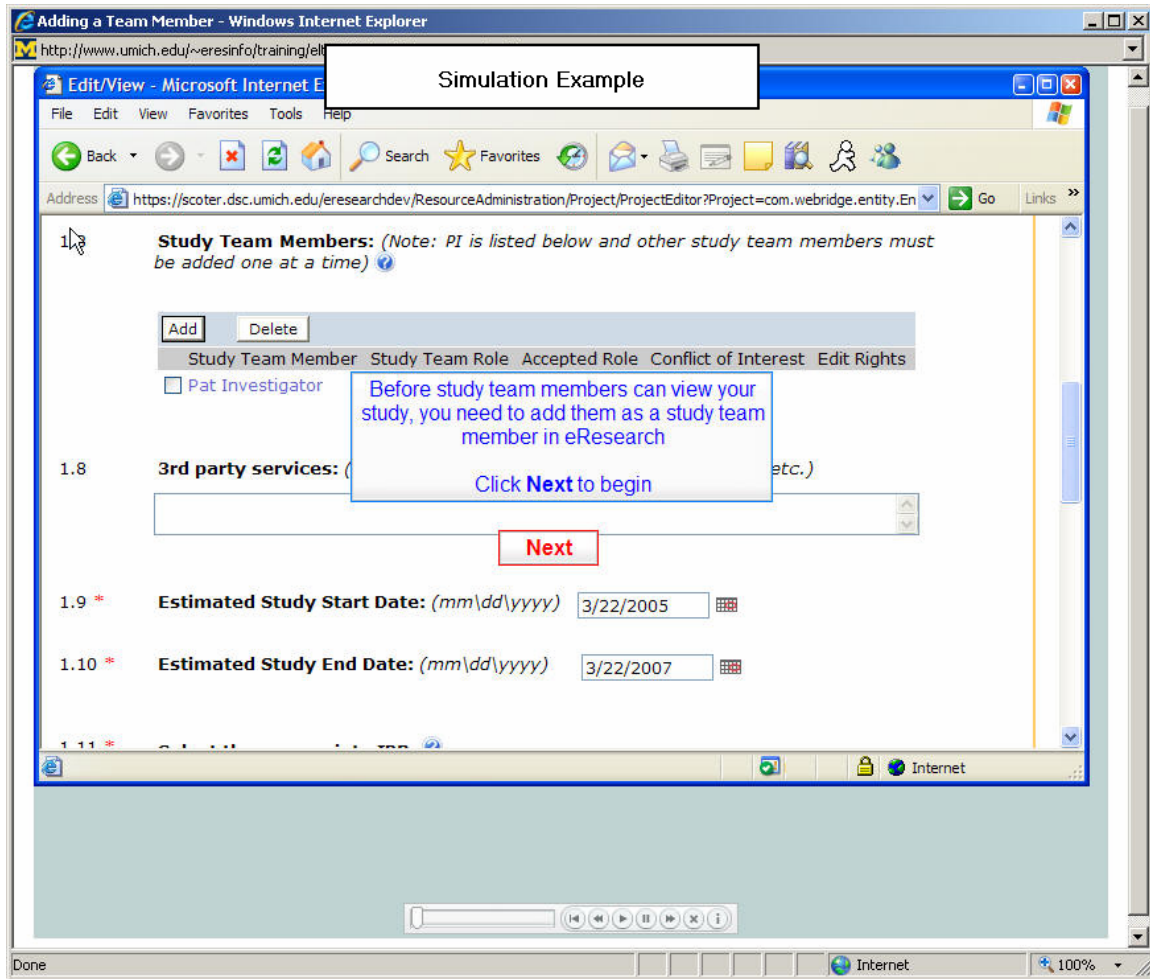


Simulation Explanation



Simulations are a recording of the system used to educate users on how to complete a transaction.

There are a couple of modes we might use:

1. Show-me – user watches transaction
2. Guided – user completes transaction with directions

Any user with a web browser and flash can play a simulation.

To view sample Regulatory Management simulations, go to:

<http://www.umich.edu/~eresinfo/training/howto.htm>