

Spacey SPM: Keeping Track of Spatial Transformations in SPM

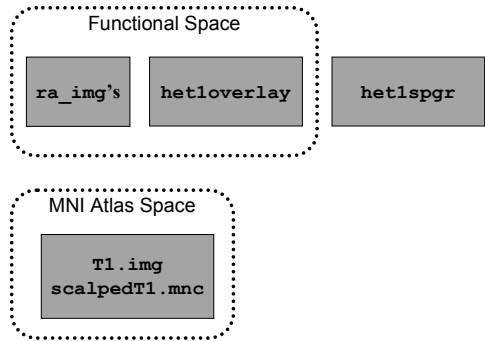
Thomas Nichols, Ph.D.
Assistant Professor
Department of Biostatistics

<http://www.sph.umich.edu/~nichols>

Introduction to fMRI
August 17, 2005

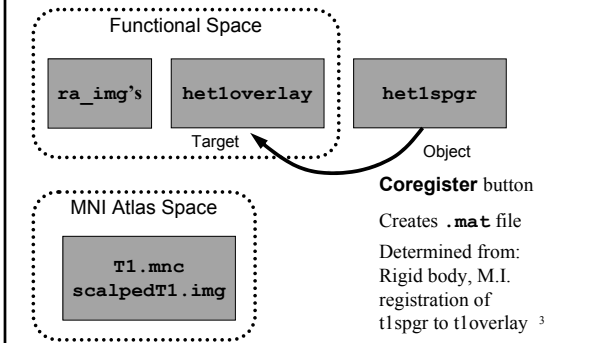
1

Data Fresh from fMRI Lab

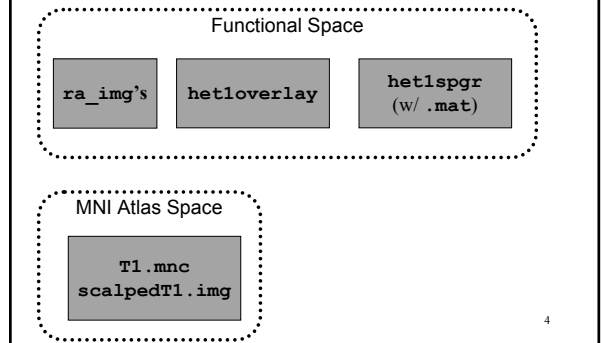


2

Coregistration

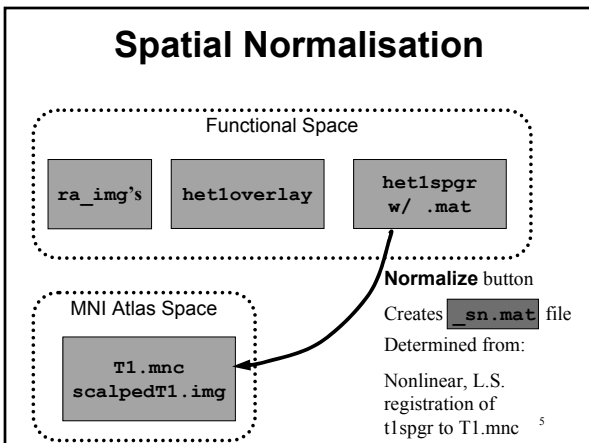


After Coregistration

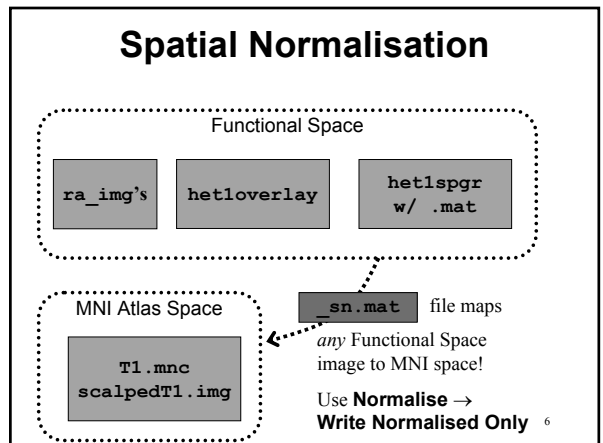


4

Spatial Normalisation

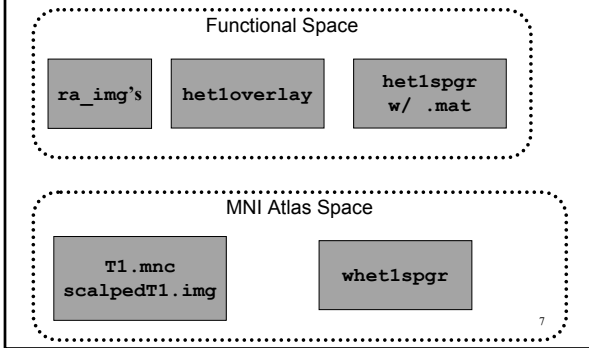


Spatial Normalisation

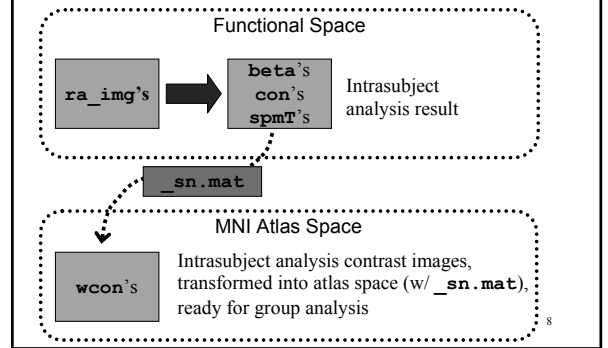


6

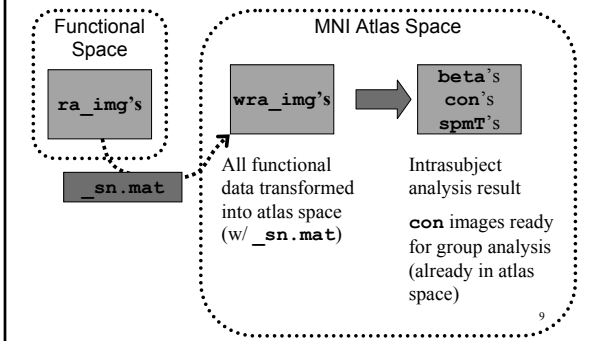
After “Writing Normalized”



Group Analysis: Strategy 1 Only transform contrast img's



Group Analysis: Strategy 2 Transform all functionals



What if Spatial Normalisation Fails?

- With ‘scalped’ brains use ‘scalped’ template
 - Scalped template `scalpedT1.img`
 - *Should* give best results
 - We don't care about scalp alignment!
- Make sure WM equal in brightness
 - T1's can have inhomogeneity artifact, where center of volume is brighter
 - Make sure to use `ht1spgr.img`'s
 - Normalise `ht1spgr.img` template `T1.mnc` ¹⁰