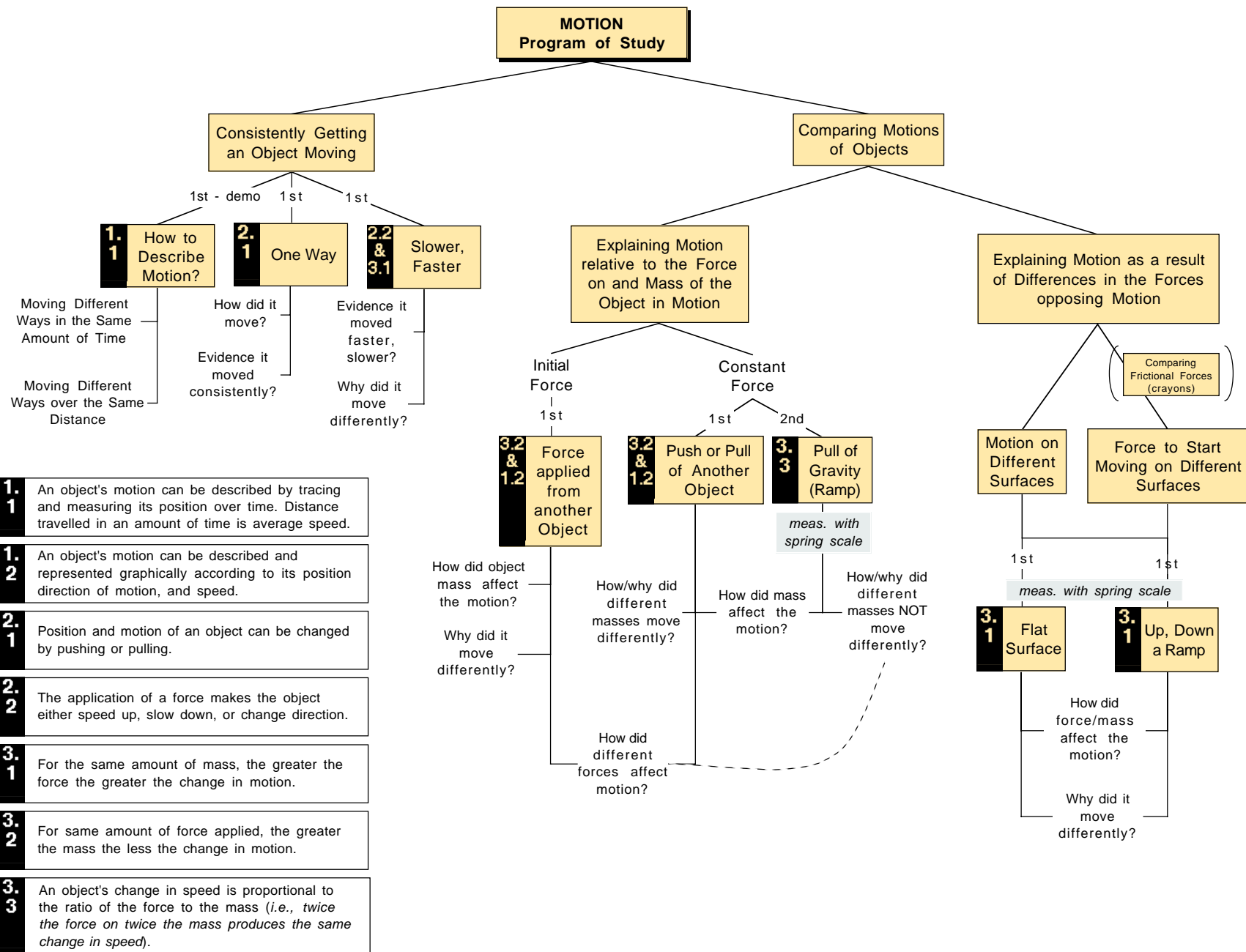


Motion Program of Study (grades 3-5) Overview Map



- 1.1** An object's motion can be described by tracing and measuring its position over time. Distance travelled in an amount of time is average speed.
- 1.2** An object's motion can be described and represented graphically according to its position direction of motion, and speed.
- 2.1** Position and motion of an object can be changed by pushing or pulling.
- 2.2** The application of a force makes the object either speed up, slow down, or change direction.
- 3.1** For the same amount of mass, the greater the force the greater the change in motion.
- 3.2** For same amount of force applied, the greater the mass the less the change in motion.
- 3.3** An object's change in speed is proportional to the ratio of the force to the mass (*i.e.*, *twice the force on twice the mass produces the same change in speed*).