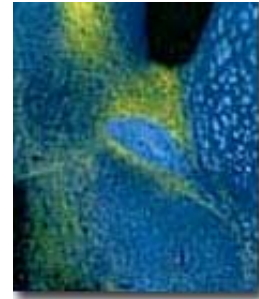




Margaret E. Gnegy Ph.D.

Professor
Director, UM Substance Abuse Research Center
Department of Pharmacology
2220 Medical Sciences Research Building III, 0626
Ann Arbor, MI 48109
3-3083

pgnegy@umich.edu
[My website](#)



 [Download](#) this page

Research Interests

My research focuses on the role of signal transduction in the mechanism of action of amphetamine and the neurobiological adaptations that occur in the brain following repeated amphetamine. In addition, we are examining the effect of amphetamine on trafficking of the dopamine transporter. Finally, we are examining the interactions between nicotine and amphetamine on brain neurochemistry and behavior.

Selected References

Chen, R., Zhang, M., Park, S., Gnegy, M.E.: C57BL/6J mice show greater amphetamine-induced locomotor activation and dopamine efflux in the striatum than 129S2/SV mice. *Pharmacol., Biochem., Behav.* In press, 2007

Chen, R., Zhang, M., Park, S., Gnegy, M.E.: C57BL/6J mice show greater amphetamine-induced locomotor activation and dopamine efflux in the striatum than 129S2/SV mice. *Pharmacol., Biochem., Behav.* In press, 2007

Johnson, L.A., Furman, C., Guptaroy, B., Gnegy, M.E., Rapid Delivery of the Dopamine Transporter upon Short-term Amphetamine Stimulation. *Neuropharmacology*, 49:750-758, 2005.

Johnson, L.A., Guptaroy, B., Lund, D., Shamban, S., Gnegy, M.E., Regulation of amphetamine-stimulated dopamine efflux by protein kinase C beta. *J Biol Chem.* 280: 10914-10919, 2005



Kantor, L., Zhang, M., Guptaroy, B., Park, Y.H. and Gnegy, M.E.: Repeated amphetamine couples norepinephrine transporter and calcium channel activities in PC12 cells. *J. Pharmacol. Exp. Therap.*, 311:1044-1051, 2004.

Gnegy, M.E.; Khoshbouei, H.; Berg, K.; Javitch, J.A.; Clarke, W.; Zhang, M.; Galli, A., Intracellular Ca²⁺ regulates amphetamine-induced dopamine efflux and currents mediated by the human dopamine transporter. *Mol. Pharmacol.*, 66:137-143, 2004.

Khoshbouei, H., Sen, N., Guptaroy, B., Johnson, L., Lund, D., Gnegy, M.E., Galli, A., Javitch, J.A., N-terminal phosphorylation of the dopamine transporter is required for amphetamine-mediated efflux. *Public Library of Science (PLOS)*, 2:387-393, 2004.

Gnegy, M.E., The effect of phosphorylation on amphetamine-mediated outward transport. *Eur. J. Pharmacol.* 479:83-91, 2003.

Park, Y.H., Kantor, L., Guptaroy, B., Wang, K.W.W. and Gnegy, M.E., Repeated Amphetamine treatment induces Neurite Outgrowth and enhanced Amphetamine-mediated Dopamine release in Rat Pheochromocytoma cells (PC12 cells) via a Protein kinase C- and mitogen-activated protein kinase-dependent mechanism. *J. Neurochem.*, 87: 1547-1557, 2003.

Find more publications by [Dr. Margaret Gnegy](#)
Last updated 5/8/2007 [Click here to update](#)

00777