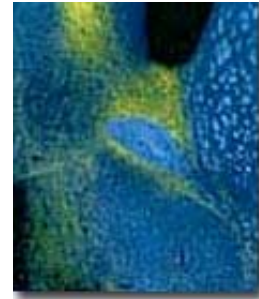




## Roger L Albin M.D.

Professor  
Department of Neurology  
5023 BSRB, 109 Zina Pitcher Place, 48109-2200  
Ann Arbor, MI 48109  
734-769-7100, 5606  
[ralbin@umich.edu](mailto:ralbin@umich.edu)



 [Download](#) this page

### Research Interests

The focus of research in my lab is neurodegeneration in polyglutamine disorders, notably Huntington disease. We use murine genetic models, cross-breeding of genetic models with other lines with mutations in pathways hypothesized to be involved in neurodegeneration, behavioral phenotyping, and neuroanatomic evaluation of neurodegeneration.

### Selected References

Tallaksen-Greene, SJ, Crouse AB, Hunter JM, Detloff PJ, Albin RL. Neuronal intranuclear inclusions and neuropil aggregates in HdhCAG(150) knockin mice. *Neurosci*, 131:843-852, 2005.

Koeppe RA, Gilman S, Joshi A, Liu S, Little R, Junck L, Heumann M, Frey KA, Albin RL. [11C]DTBZ and [18F]FDG PET measures in differentiating dementias. *J Nuc Med*, 46:936-944, 2005.

Find more publications by [Dr. Roger Albin](#)  
Last updated 5/9/2007 [Click here to update](#)

01505

