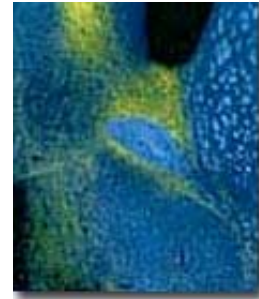




Ruthann Nichols Ph.D.

Associate Professor
Department of Biological Chemistry
4008 Natural Science Building 1048
Ann Arbor, MI 48109
nicholsr@umich.edu



 [Download](#) this page

Research Interests

My research interests include understanding the role of neuropeptides and receptors in physiology. A long term goal is to determine how the misexpression of a neuropeptide results in a neurological disorder. We are studying the conserved FMRFamide peptide family. FMRFamide peptides affect muscle movement of cardiovascular, gastrointestinal, and reproductive tissues. We have isolated *Drosophila* FMRFamide peptides and applied a molecular approach to elucidate regulation of expression and mechanism of action, and to demonstrate that TDVDHVFLRFamide (DMS) and SDNFMRFamide are cardioinhibitory peptides. We are isolating the mouse FMRFamide peptide homologs in order to utilize a molecular genetics approach to delineate the role of this peptide family in mammalian physiology.

Selected References

Nichols, R., Lim, I., McCormick, J.: Antisera to multiple antigenic peptides detect neuropeptide processing. *Neuropeptides* 33:35-40, 1999.

Robbins, J., Aggarwall, R., Nichols, R., Gibson, G.: Genetic variation for *Drosophila* heart rate. *Gen. Res.* 74:121-128, 1999.

Nichols, R., Kaminski, S., Walling, E., Zornik, E.: Regulating the activity of a cardioacceleratory neuropeptide. *Peptides* 20:1153-1158, 1999.

Nichols, R., McCormick, J., Lim, I.: Structures and functions of *Drosophila melanogaster* FMRFamide-related peptides. *Ann. N.Y. Acad. Sci.* 897:264-272, 1999.



Richer, S., Stoffolano, J.G., Jr., Yin, C.M., Nichols, R.: Innervation of dromyosuppressin (DMS) immunoreactive processes and effect of DMS and benzethonium chloride on the *Phormia regina* (Meigen) crop. *Journal of Comparative Neurology*. 421:136-42, 2000

Find more publications by [Dr.Ruthann Nichols](#)

Last updated 10/9/2006 Click here to [update](#)

00252