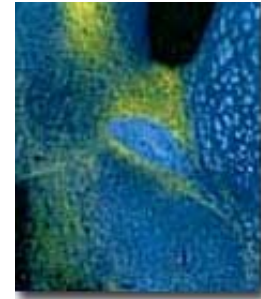




Sally A Camper Ph.D.

Professor
Department of Human Genetics
4301 Medical Science Research Building III, 0638
Ann Arbor, MI 48109
(734)763-0682
scamper@umich.edu



 [Download](#) this page

Research Interests

Our understanding of the development and function of the neuroendocrine system has been advanced by the application of three basic approaches. 1) Characterization of spontaneous mouse mutants with developmental defects. 2) Elucidation of novel phenotypes arising from targeted disruption of genes expressed in the developing neural and oral ectoderm. 3) Use of transgene technology to determine the role of cell lineage and cell-cell interactions in pituitary and hypothalamic development. This involves generation of transgenic mice that express toxin genes in a cell-specific fashion during ontogeny.

Selected References

Camper SA. Mouse knockout solves endocrine puzzle and promotes new pituitary lineage model. *Genes Dev.* 2003 17:677-82.

Marcil A, Dumontier E, Chamberland M, Camper SA, Drouin J. Pitx1 and Pitx2 are required for development of hindlimb buds. *Development.* 2003 130:45-55.

Anderson, D.W., Probst, F.J., Belyantseva, I.A., Fridell, R.A., Beyer, L., Martin, D.M., Wu, D., Kachar, B., Friedman, T.B., Raphael, Y., Camper, S.A.: The motor and tail regions of myosin XV are critical for normal structure and function of auditory and vestibular hair cells. *Human Molecular Genetics.* 9:1729-38, 2000

Martin, D.M., Probst, F.J., Camper, S.A., Petty, E.M.: Characterization and genetic mapping of a new X linked deafness syndrome. *Journal of Medical Genetics* (Online). 37:836-41, 2000



Cushman, L.J., Burrows, H.L., Seasholtz, A.F., Lewandoski, M., Muzyczka, N., Camper, S.A.: Cre-mediated recombination in the pituitary gland. *Genesis: the Journal of Genetics & Development*. 28:167-74, 2000

Zhao, L., Bakke, M., Krimkevich, Y., Cushman, L.J., Parlow, A.F., Camper, S.A., Parker, K.L.: Steroidogenic factor 1 (SF1) is essential for pituitary gonadotrope function. *Development*. 128:147-54, 2001

Find more publications by [Dr.Sally Camper](#)

Last updated 11/7/2004 Click here to [update](#)

00668