



## **Evaluation of the Time Use data in PSID with comparisons to ATUS**

Noura E. Insolera

David S. Johnson

Beth A. Simmert

Institute for Social Research, University of Michigan

September, 2019

## **Introduction**

The PSID has collected work hours and housework hours from family members since 1968. Reference persons ('head' prior to 2017) were asked about hours worked since 1968 and spouse/partners ('wife/'wife'" prior to 2015) began collection in the early 1970s (Wales and Woodland 1977). These overall measures offer several benefits relative to time diary and experience sampling measures (Juster et al. 2003). In 2017, and again in 2019, PSID collected from reference persons and spouses/partners stylized time use measures (Pencavel 1986), in which a respondent is asked to provide amounts of time per week devoted to eight non-work activities for themselves and their spouse/partner when applicable (housework, personal care, shopping, child care, adult care, education, volunteering, leisure).

The objective of this brief report is to provide a comparison of the new time use questions in the PSID with estimates from the most widely used nationally representative time use survey, the American Time Use Survey (ATUS). We also compare the overall estimates from the PSID to the time use questions collected in the Health and Retirement Study's Consumption and Activities Mail Survey (HRS-CAMS). We begin by briefly summarizing the time use information that has been collected throughout the history of the PSID. The subsequent section describes the time use measures for all three surveys (PSID, ATUS, HRS-CAMS). The estimates for each survey are then presented, with a focus on comparing PSID and ATUS. In general, despite differences in the designs between these surveys, the amount spent of the common activities align well over time. Finally, we include estimates of the relationship between time use and income, consumption and wealth.

## **Study Overviews**

### **PSID**

The PSID is a nationally representative panel study that began in 1968. Families were interviewed annually until 1997 and biennially thereafter. A sample of immigrants was added in 1997 (and again in 2017) to make the sample representative of families who arrived in the US after the PSID began in 1968. When children of PSID families become economically independent adults they become eligible for participation. In single-headed households, health questions are asked about the reference person; in couple-headed households information is gathered about both spouses/partners. The sample is weighted to represent the national adult population in a given year. In the time use section, the average weekly hours of time spent on eight activities were collected from both the reference person and the spouse/partner.

Since 1968, respondents have been asked to report amount of time spent at work in an average week and amount of time spent doing housework in an average week. In 2017, PSID added seven additional categories of time use and slightly revised the work and housework items to match. Categories included: personal care, shopping, caring for children, caring for an adult, volunteering, educational activities and leisure activities. PSID asks respondents to report time

for a “typical” week. There is no explicit instruction to count activities in multiple categories or to distinguish between primary and secondary activities.<sup>1</sup>

## **ATUS**

ATUS, The American Time Use Survey (ATUS) is the nation’s first federally administered, continuous survey on time use in the United States. The goal of the survey is to measure how people divide their time among life’s activities. In ATUS, individuals are randomly selected from a subset of households that have completed their eighth and final month of interviews for the Current Population Survey (CPS).

ATUS respondents are interviewed only one time about how they spent their time on the previous day, where they were, and whom they were with. The survey is sponsored by the Bureau of Labor Statistics and is conducted by the U.S. Census Bureau. To ensure good measures of time spent on weekdays and weekend days, the sample also is split evenly between weekdays and weekend days.

Most activities are captured with open text (although common activities are pre-coded directly by interviewers). The open text is then coded into 140 time use categories. The diary does not capture secondary activities (activities that are simultaneously carried out at the same time as a primary activity). Separate modules ask about child care and elder care; we have not considered the module reports here.<sup>2</sup>

## **HRS-CAMS**

Beginning in 1992, the Health and Retirement Study (HRS) is designed to study labor force, health, and family transitions of the U.S. population aged 51 and older, and the impact of those transitions on economic resources, claims on structured programs such as Social Security, Medicare, and Medicaid, and informal assistance and transfers to and from family members. The 2017 Consumption and Activities Mail Survey (CAMS), was a continuation of the longitudinal CAMS that started in 2001. HRS-CAMS questionnaires assessing individual activities and household patterns of consumption were mailed to a sub sample of the Health and Retirement Study (HRS)<sup>3</sup>.

Depending on the specific activity category, HRS-CAMS may instruct respondents to report time for the previous week, month, or year. HRS explicitly instructs respondents to report the same amount of time spent in simultaneous activity in both categories (example given is that time spent listening to music while preparing a meal should be reported in both categories).

Table 1 shows a detailed comparison of the activities in the PSID, ATUS, and HRS-CAMS.

---

<sup>1</sup> <ftp://ftp.isr.umich.edu/pub/src/psid/questionnaires/q2017.pdf>

<sup>2</sup> <https://www.bls.gov/tus/tuquestionnaire.pdf>

<sup>3</sup> [http://hrsonline.isr.umich.edu/modules/meta/2017/cams/desc/2017CAMS\\_DD.pdf](http://hrsonline.isr.umich.edu/modules/meta/2017/cams/desc/2017CAMS_DD.pdf)

The categories of activities in PSID include the following:

1. Housework, for example, cooking, cleaning, and other work around the house. 2. Doing personal care activities, for example, grooming, getting ready for the day, or taking care of your health needs.
3. Shopping, for example, buying groceries or clothes, or shopping online.
4. Caring for or looking after children.
5. Caring for or looking after an adult who needs assistance with daily activities.
6. Volunteering, for example, at religious organizations, schools, hospitals, charities, or community organizations.
7. Educational activities, for example, taking classes, doing homework, or studying for exams.
8. Leisure activities for enjoyment, for example, watching TV, doing physical activities that you enjoy, going online, or spending time with friends.
9. Time spent working in a typical week. In a typical week, how many hours do you spend working for pay?

For both work and non-work time, PSID also includes questions about the frequency of social, physical, cognitive, and time pressure.

1. Socially demanding: how often do you interact with other people, including on the phone, in person and online?
2. Physically demanding: how often do you perform physically demanding activities, for example, those that require strength or physical effort for long periods of time?
3. Mentally demanding: how often do you perform mentally demanding activities, for example, analyzing information, learning new material, or solving complex problems?
4. Time pressure: how often do you feel rushed or pressed for time?

## **Results**

Since housework has been collected in both PSID and ATUS for many years, Figure 1 shows the historical comparison of the amount of time respondents spend on housework. The trends are similar and the levels for females lie very close, and show a slight fall over the past decade. The levels for men are also flat and consistently show that men spend almost half as much time on housework as women. In addition, ATUS finds that men spend one hour more on housework

than reported in PSID. Given that the ATUS includes many more categories than the PSID includes in the question, these are remarkably close.<sup>4</sup>

Tables 2a and 2b show the detailed comparison by comparable activities of time, for men and women, by different age groups for both PSID and ATUS. Most categories for all ages are comparable. For example, time spent volunteering and shopping are not only similar in terms of values, but the trends by age and sex mirror each other as well.

Child care estimates are notably higher in PSID than in ATUS. This finding could be because a substantial amount of child care may be classified as a secondary activity and therefore not captured by the ATUS time diary. Stewart and Allard (2015) examine both the primary and secondary child care and find that for families with children, both men and women spend three times as much on secondary child care than on primary child care. This adjustment could yield more comparable estimates between PSID and ATUS (see Table 7 for estimates of child care for families with children in PSID).

Leisure estimates are lower in PSID than in ATUS. It is possible that the phrase “for enjoyment” leads to under-reporting of leisure, since not all leisure activities are enjoyable. Moreover, the PSID only explicitly mentions four activities (watching TV, doing physical activities, going online, or spending time with friends), while ATUS sums time over a large number of activities (see Table 1). For example, for those over age 65, the total PSID leisure estimate is 23.5 hours per week, while just TV watching in ATUS is 30.6 hours – more than half the total amount of 51.2.

Figure 2a shows PSID data for men and women in various age groups. This figure shows that women in each age group spend more total time on work, education, child and adult care, volunteering and housework/shopping than do men. The figure also shows that total time decreases with age. While this pattern is mainly due to work hours, child and adult care also decrease with age. Alternatively, housework hours increase slightly with age. In ATUS (Figure 2b) the total hours decrease with age; however, because of the low estimate of child care, the total hours spent in these activities is similar for women and men for each age group.<sup>5</sup>

Table 3 compares the averages for the nine activities in PSID, ATUS and HRS-CAMS for those aged 55 and over. For all activities except leisure the time estimates are similar across the three surveys.

---

<sup>4</sup> If we restrict the PSID data to the respondents (and exclude proxy reports), the estimates for men’s hours are closer

<sup>5</sup> If we assume that the secondary child care in the ATUS raises the child care total by 4 times, an adjusted Figure 2b would be very similar to figure 2a

## **Specific PSID Time Use Results**

The inclusion of time use on PSID provides additional research possibilities. For example, PSID is the only data set with information on income, consumption, wealth and time use for all stages of the life course. Linking time use with household expenditures is critical in evaluating labor supply decisions and home production activities that can contribute to household well-being (Hurst, 2016).

Another advantage is that PSID collects time use from both the reference person and the spouse/partner as opposed to one randomly selected individual in the family (as in ATUS). This allows a comparison of time spent by both partners in couple-headed households, and eventually, how these change over time.

Tables 4a, 4b, and 4c show the time spent on the eight activities by income, consumption and wealth quintile. Figures 3a, 3b, and 3c show that housework is distributed differently by income, wealth and consumption. Figures 3a and 3b show that housework/shopping falls with income and wealth. Figure 3b shows that adult and child care falls dramatically with wealth. All three figures show that personal care remains fairly constant as household resources increase. Figure 3c, however, shows that the relationships between housework/shopping is different by consumption. Those with high consumption also have higher housework/shopping and time spent on child and adult care.

Table 5 compares the activities for partnered men and women in PSID. The relationship between men and women is similar to that shown in Figure 2, but more pronounced. Women in couples/partnered relationships do 2.2 times as much housework/shopping as men, while the ratio is 1.8 in Figure 2 (and is 1.2 for singles).

Table 6 shows the frequencies for descriptors of time spent at work and outside of work for men and women. Women are more likely to experience time pressure (or feel rushed often or always) in non-work activities than men, while men and women are equally likely to experience time pressure at work. In addition, outside of work women are more likely than men to interact with people, while they interact with people at the same rates as men at work. For both men and women, they engage in more social, physical, mental and stressful activities at work than outside work.

## **Conclusion**

This paper shows that despite differences in the designs of the two surveys, the time use measures in PSID align well with ATUS. The most substantial differences between the two studies are in the amount of time spent on leisure. PSID is also comparable with HRS for individuals aged 55 and older.

The time use questions in PSID will provide additional research possibilities. Linking time use with family consumption, wealth and income are critical in evaluating labor supply decisions and home production activities that can contribute to household well-being (Hurst, 2016). As people age, their choices between work and non-work activities change, which affects the trade-off between consumption and home production. Family wealth further increases their ability to make additional health and consumption choices. The confluence of work and non-work time, income, and wealth impact a family's consumption and health decisions, which in turn affect the health and well-being of the individual family members (see for example Babiarz and Yilmazer, 2017). With the addition of data from 2019, the biennial changes in time spent on activities can be evaluated in response to changes in employment (Krueger and Mueller (2012)), and other economic and health conditions. These longitudinal data will allow researchers to examine the correlations of the use of time with income and wealth, and whether heterogeneous variations in families' choices are due to preferences between consumption and leisure hanging over time.

#### REFERENCES:

Babiarz, Patryk and Yilmazer, Tansel. 2017. "Health The Impact of Adverse Health Events on Consumption: Understanding the Mediating Effect of Income Transfers, Wealth, and Health," *Insurance.Economics*. 2017. 26, (12): 1743-1758.

Hurst, Erik. 2015. "Measuring Time Use in Household Surveys," *Journal of Economic and Social Measurement*, 40 (1-4), 177-196.

Juster, F.T, Ono, H. and FP Stafford. 2003. "An Assessment of Alternative Measures of Time Use." *Sociological Methodology*;33:19-54.

Krueger, Alan and Mueller, Andreas. 2012. "Time Use, Emotional Well-Being, and Unemployment: Evidence from Longitudinal Data." *American Economic Review: Papers & Proceedings* 102(3): 594–599.

Pencavel, J. 1986. *Labor Supply of Men: A Survey*. Handbook of Labor Economics (Vol 1), Elsevier.

Stewart, J. and Allard, M.D. 2015. *Secondary Childcare in the ATUS: What Does It Measure?*, IZA Discussion Paper No. 9376.

Wales, Terrence J. and Woodland, A. D. 1977. "Estimation of the Allocation of Time for Work, Leisure and Housework," *Econometrica*. 45, (1): 115-132.

Table 1. PSID/ATUS/HRS-CAMS Time Use Comparisons

HOUSEWORK: PSID Question - In a typical week, how many hours you spend doing housework, for example, cooking, cleaning, and other work around the house?		
PSID (typical week)	ATUS (actual time yesterday)	HRS/CAMS (actual time)
Cooking	Food & Drink Prep, Presentation, & Clean-up • Food and drink preparation • Food presentation • Kitchen and food clean-up	Last week • A17. Preparing meals and cleaning-up afterwards
NA	Eating and Drinking • Eating and drinking	Last week • A34. Eating meals at home last week
Cleaning	Housework • Interior cleaning • Laundry • Sewing, repairing, & maintaining textiles • Storing interior hh items, including food	Last week • A13. House cleaning • A14. Washing, ironing, or mending clothes
“other work around the house”	Food & Drink Prep, Presentation, & Clean-up • Food & Drink prep, presentation, & clean-up, n.e.c. Housework • Housework, n.e.c.* Interior Maintenance, Repair & Decoration • Interior arrangement, decoration, & repairs • Building and repairing furniture • Heating and cooling • Interior maintenance, repair, & decoration, n.e.c.* Exterior Maintenance, Repair & Decoration • Exterior cleaning • Exterior repair, improvements, & decoration • Exterior maintenance, repair & decoration, n.e.c.* Lawn, Garden, and Houseplants • Lawn, garden, and houseplant care • Ponds, pools, and hot tubs • Lawn and garden Animals and Pets • Care for animals and pets (not veterinary care) • Pet and animal care, n.e.c.* Vehicles • Vehicle repair and maintenance (by self) • Vehicles, n.e.c.* Appliances, Tools, and Toys • Appliance, tool, and toy set-up, repair, & maintenance (by self) • Appliances and tools Household Management • Financial Management • Household & personal organization and planning • HH & personal mail & messages (except e-mail) • HH & personal e-mail and messages • Home security • Household management, n.e.c.*	Last week • A15. Yard work or gardening • A19. Caring for pets Last month • A25. Taking care of finances or investments, such as banking, paying bills, balancing the checkbook, doing taxes, etc. • A31. Doing home improvements, including painting, redecorating, or making home repairs • A32. Working on, maintaining, or cleaning your car(s) or vehicle(s) Last week/month/or year • A37. During the past year, about how much time did you spend on average paying or managing medical bills, including dealing with insurance claims? If you helped another person manage his or her bills or claims, please include that time.
NA	Travel related to Household Activity	Travel related to Household Activity

SELF-CARE: PSID Question - Doing personal care activities, for example, grooming, getting ready for the day, or taking care of your health needs?		
PSID (typical week)	ATUS (actual time yesterday)	HRS/CAMS (actual time)
Grooming	Grooming • Washing, dressing, and grooming oneself	Last week • A18. Personal grooming and hygiene, such as bathing and dressing
Getting ready for the day	Grooming, n.e.c. Self-care, n.e.c.	Last week • A18. Personal grooming and hygiene, such as bathing and dressing
Taking care of health needs	Health-related self-care Professional & Personal Care Services	Last month



SELF-CARE: PSID Question - Doing personal care activities, for example, grooming, getting ready for the day, or taking care of your health needs?		
PSID (typical week)	ATUS (actual time yesterday)	HRS/CAMS (actual time)
	<ul style="list-style-type: none"> <li>• Medical and care services</li> <li>• Using health and care services outside the home</li> <li>• Using in-home health and care service</li> <li>• Using medical services, n.e.c.*</li> </ul>	<ul style="list-style-type: none"> <li>• A26. Treating or managing an existing medical condition of your own</li> </ul> Last week/month/or year <ul style="list-style-type: none"> <li>• A35. Think of how much time you spend seeing doctors, nurses, therapists or other health care providers about your own health [...]: During the past year, about how much time did you spend on average on these activities, including travel time?</li> </ul>
NA	Personal Activities <ul style="list-style-type: none"> <li>• Personal/Private activities</li> <li>• Personal activities, n.e.c.*</li> </ul>	Last week <ul style="list-style-type: none"> <li>• A20. Physically showing affection for others through hugging, kissing, etc.</li> </ul>
NA	Waiting associated with medical services	NA
NA	Travel related to Personal Care	Travel related to Personal Care

SHOPPING: PSID Question - Shopping, for example, buying groceries or clothes, or shopping online?		
PSID (typical week)	ATUS (actual time yesterday)	HRS/CAMS (actual time)
Hours spent "Shopping"...	Shopping <ul style="list-style-type: none"> <li>• Purchasing gas</li> <li>• Purchasing food (not groceries)</li> <li>• Shopping, n.e.c.*</li> </ul>	Last week <ul style="list-style-type: none"> <li>• A16. Shopping or running errands</li> </ul>
Buying groceries	Shopping (Store, Telephone, Internet) <ul style="list-style-type: none"> <li>• Grocery shopping</li> </ul>	NA
Buying clothes	Shopping (Store, Telephone, Internet) <ul style="list-style-type: none"> <li>• Shopping, except groceries, food and gas</li> </ul>	NA
Shopping online	NA	NA
NA	Waiting associated with shopping	NA
NA	Travel related to Shopping	Travel related to Shopping

CARING FOR CHILDREN: PSID Question - Caring for or looking after children?		
PSID (typical week)	ATUS (actual time yesterday)	HRS/CAMS (actual time)
Caring for or looking after children	Physical care for children <ul style="list-style-type: none"> <li>• Reading to/with children</li> <li>• Playing with children, not sports</li> <li>• Arts and crafts with children</li> <li>• Playing sports with children</li> <li>• Talking with/listening to children</li> <li>• Organization &amp; planning for children</li> <li>• Looking after children (as a primary activity)</li> <li>• Attending children's events</li> <li>• Waiting for/with children</li> <li>• Picking up/dropping off children</li> <li>• Caring for &amp; helping children, n.e.c.*</li> </ul> Activities Related to HH Children's Education <ul style="list-style-type: none"> <li>• Meetings and school conferences</li> <li>• Home schooling of children</li> <li>• Waiting associated with children's education</li> <li>• Activities related to child's education, n.e.c.*</li> </ul> Activities Related to HH Children's Health <ul style="list-style-type: none"> <li>• Providing medical care to children</li> <li>• Obtaining medical care for children</li> <li>• Waiting associated with children's health</li> <li>• Activities related to child's health, n.e.c.*</li> </ul>	Last month <ul style="list-style-type: none"> <li>• A21. Helping friends, neighbors, or relatives who did not live with you and did not pay you for the help</li> <li>• A21.5. Taking care of grandchildren</li> </ul> Last week <ul style="list-style-type: none"> <li>• A36. Did you spend any time last week treating or managing the medical condition of another person? (child, step child, grandchild, other)</li> </ul>
NA	Travel related to Caring for Children	Travel related to Caring for Children

CARING FOR ADULTS: PSID Question - Caring for or looking after an adult who needs assistance with daily activities?		
PSID (typical week)	ATUS (actual time yesterday)	HRS/CAMS (actual time)
Caring or looking after an adult who need assistance with daily activities	<p>Caring for Adults</p> <ul style="list-style-type: none"> <li>• Physical care for adults</li> <li>• Looking after adult (as a primary activity)</li> <li>• Providing medical care to adult</li> <li>• Obtaining medical and care services for adult</li> <li>• Waiting associated with caring for household adults</li> <li>• Caring for adults, n.e.c.*</li> </ul> <p>Helping Adults</p> <ul style="list-style-type: none"> <li>• Helping adults</li> <li>• Organization &amp; planning for adult</li> <li>• Picking up/dropping off adult</li> <li>• Waiting associated with helping adults</li> <li>• Helping household adults, n.e.c.*</li> </ul>	<p>Last month</p> <ul style="list-style-type: none"> <li>• A21. Helping friends, neighbors, or relatives who did not live with you and did not pay you for the help</li> </ul> <p>Last week</p> <ul style="list-style-type: none"> <li>• A36. Did you spend any time last week treating or managing the medical condition of another person?</li> </ul>
NA	Travel related to Caring for Adults	Travel related to Caring for Adults

VOLUNTEERING: PSID Question - Volunteering, for example, at religious organizations, schools, hospitals, charities, or community organizations?		
PSID (typical week)	ATUS (actual time yesterday)	HRS/CAMS (actual time)
Volunteer Activities	<p>Administrative &amp; Support Activities</p> <ul style="list-style-type: none"> <li>• Computer use</li> <li>• Organizing and preparing</li> <li>• Reading</li> <li>• Telephone calls (except hotline counseling)</li> <li>• Writing</li> <li>• Fundraising</li> <li>• Administrative &amp; support activities, n.e.c.*</li> </ul> <p>Social Service &amp; Care Activities (Except Medical)</p> <ul style="list-style-type: none"> <li>• Food preparation, presentation, clean-up</li> <li>• Collecting &amp; delivering clothing &amp; other goods</li> <li>• Providing care</li> <li>• Teaching, leading, counseling, mentoring</li> <li>• Social service &amp; care activities, n.e.c.*</li> </ul> <p>Indoor &amp; Outdoor Maintenance, Building, &amp; Clean-up Activities</p> <ul style="list-style-type: none"> <li>• Building houses, wildlife sites, &amp; other structures</li> <li>• Indoor &amp; outdoor maintenance, repair, &amp; clean-up</li> <li>• Indoor &amp; outdoor maintenance, building &amp; clean-up activities, n.e.c.</li> </ul> <p>Participating in Performance &amp; Cultural Activities</p> <ul style="list-style-type: none"> <li>• Performing</li> <li>• Serving at volunteer events &amp; cultural activities</li> <li>• Participating in performance &amp; cultural activities, n.e.c.*</li> </ul> <p>Attending Meetings, Conferences, &amp; Training</p> <ul style="list-style-type: none"> <li>• Attending meetings, conferences, &amp; training</li> <li>• Attending meetings, conferences, &amp; training, n.e.c.*</li> </ul> <p>Public Health &amp; Safety Activities</p> <ul style="list-style-type: none"> <li>• Public health activities</li> <li>• Public safety activities</li> <li>• Public health &amp; safety activities, n.e.c.*</li> </ul> <p>Volunteer Activities, n.e.c.*</p> <ul style="list-style-type: none"> <li>• Volunteer activities, n.e.c.*-- Includes Waiting Associated with Volunteer Activities</li> <li>• Security Procedures Associated with Volunteer Activities</li> </ul>	<p>Last month</p> <ul style="list-style-type: none"> <li>• A22. Doing volunteer work for religious, educational, health-related, or other charitable organizations</li> </ul>
NA	Travel related to Volunteering	Travel related to Volunteering

EDUCATION: PSID Question - Doing educational activities [...], taking classes, doing homework, or studying for exams? (Exclude helping others with homework)		
PSID (typical week)	ATUS (actual time yesterday)	HRS/CAMS (actual time)
Taking classes	Taking Classes • Taking class for degree, certification, or licensure • Taking class for personal interest • Waiting associated with taking classes • Security procedures rel. to taking classes • Taking class, n.e.c.*	NA
NA	Extracurricular School Activities (Except Sports) • Extracurricular club activities • Extracurricular music & performance activities • Extracurricular student government activities • Education-related extracurricular activities, n.e.c.*	NA
Doing homework	Research/Homework • Research/homework for class for degree, certification, or licensure • Research/homework for class for pers. interest • Waiting associated with research/homework • Research\ homework n.e.c.*	NA
Studying for exams	NA	NA
NA	Registration/Administrative activities • Administrative activities: class for degree, certification, or licensure • Administrative activities: class for personal interest • Waiting associated w/admin. activities (education) • Administrative for education, n.e.c.*	NA
NA	Travel related to Education	NA

LEISURE: PSID Question - Doing leisure activities for enjoyment, for example, watching TV, doing physical activities that you enjoy, going online, or spending time with friends?		
PSID (typical week)	ATUS (actual time yesterday)	HRS/CAMS (actual time)
Leisure activities for enjoyment (not specified) (could overlap with “spending time with friends”)	Attending Sports/Recreational Events Arts and Entertainment (other than Socializing, Relaxing, and Leisure • Relaxing, thinking • Tobacco and drug use • Listening to the radio • Listening to/playing music (not radio) • Playing games • Computer use for leisure (exc. Games) • Arts and crafts as a hobby • Collecting as a hobby • Hobbies, except arts & crafts and collecting • Reading for personal interest • Writing for personal interest • Relaxing and leisure, n.e.c.* Participating in Sports, Exercise, and Recreation • Arts and Entertainment (other than sports) • Attending performing arts • Attending museums • Attending movies/ film • Attending gambling establishments • Security procedures rel. to arts & entertainment • Arts and entertainment, n.e.c.*	Last week • A2. Reading newspapers or magazines • A3. Reading books • A4. Listening to music • A11. Using the computer Last month • A27. Playing cards or games, or solving puzzles • A28. Attending concerts, movies, or lectures, or visiting museums • A29. Singing or playing a musical instrument • A30. Doing arts and crafts projects, including knitting, embroidery, or painting • A33. Dining or eating outside the home (not related to business or work)
Watching TV Going online (could be alone or overlap with “Spending time with friends”)	Socializing, Relaxing, and Leisure • Television and movies (not religious) • Television (religious) • Computer use for leisure (exc. Games)	Last Week • A1. Watching programs or movies/videos on TV • A9. Communicating by telephone, letters, e-mail, Facebook, Skype, or other media with friends, neighbors, or relatives • A11. Using the computer
Doing physical activities that you enjoy (could be alone or overlap with “Spending time with friends”)	Participating in Sports, Exercise, and Recreation	Last Week • A6. Walking • A7. Participating in sports or other exercise activities

LEISURE: PSID Question - Doing leisure activities for enjoyment, for example, watching TV, doing physical activities that you enjoy, going online, or spending time with friends?		
PSID (typical week)	ATUS (actual time yesterday)	HRS/CAMS (actual time)
“Spending time with friends”	Socializing and Communicating • Socializing and communicating with others • Socializing and communicating, n.e.c.* Attending or Hosting Social Events •Attending or hosting parties/receptions/ceremonies • Attending meetings for personal interest (not volunteering) • Attending/hosting social events, n.e.c.*	Last Week • A8. Visiting in-person with friends, neighbors, or relatives • A9. Communicating by telephone, letters, e-mail, Facebook, Skype, or other media with friends, neighbors, or relatives • A2. Reading newspapers or magazines • A3. Reading books • A4. Listening to music Last month • A24. Attending meetings of clubs or religious groups
NA	Religious and Spiritual Activities •Participating in religious practices	Last week • A12. Praying or meditating Last month • A23. Attending religious services
NA	Waiting associated with Socializing, Relaxing, and Leisure	NA
NA	Travel related to Leisure Activities	Travel related to Leisure Activities

WORKING FOR PAY: PSID Question - In a typical week, how many hours do you spend working for pay?		
PSID (typical week)	ATUS (actual time yesterday)	HRS/CAMS (actual time)
Hours spent working for pay	Working • Work, main job • Work, other job(s) • Security procedures related to work • Working, n.e.c.* Work-Related Activities •Socializing, relaxing, and leisure as part of job • Eating and drinking as part of job • Sports and exercise as part of job • Security procedures as part of job •Work-related activities, n.e.c.* Other Income-Generating Activities • Income-generating hobbies, crafts, and food • Income-generating performances • Income-generating services • Income-generating rental property activities • Other income-generating activities, n.e.c.* Job Search and Interviewing •Job search activities Includes • Job interviewing • Waiting associated with job search or interview • Security procedures rel. to job search/interviewing • Job search and Interviewing, n.e.c.* Work and Work-Related Activities, n.e.c.* •Work and work-related activities, n.e.c.*	Last week • A10. Working for pay
NA	Travel related to Work	Travel related to Work

Figure 1: Weekly Housework Time by Sex, PSID and ATUS

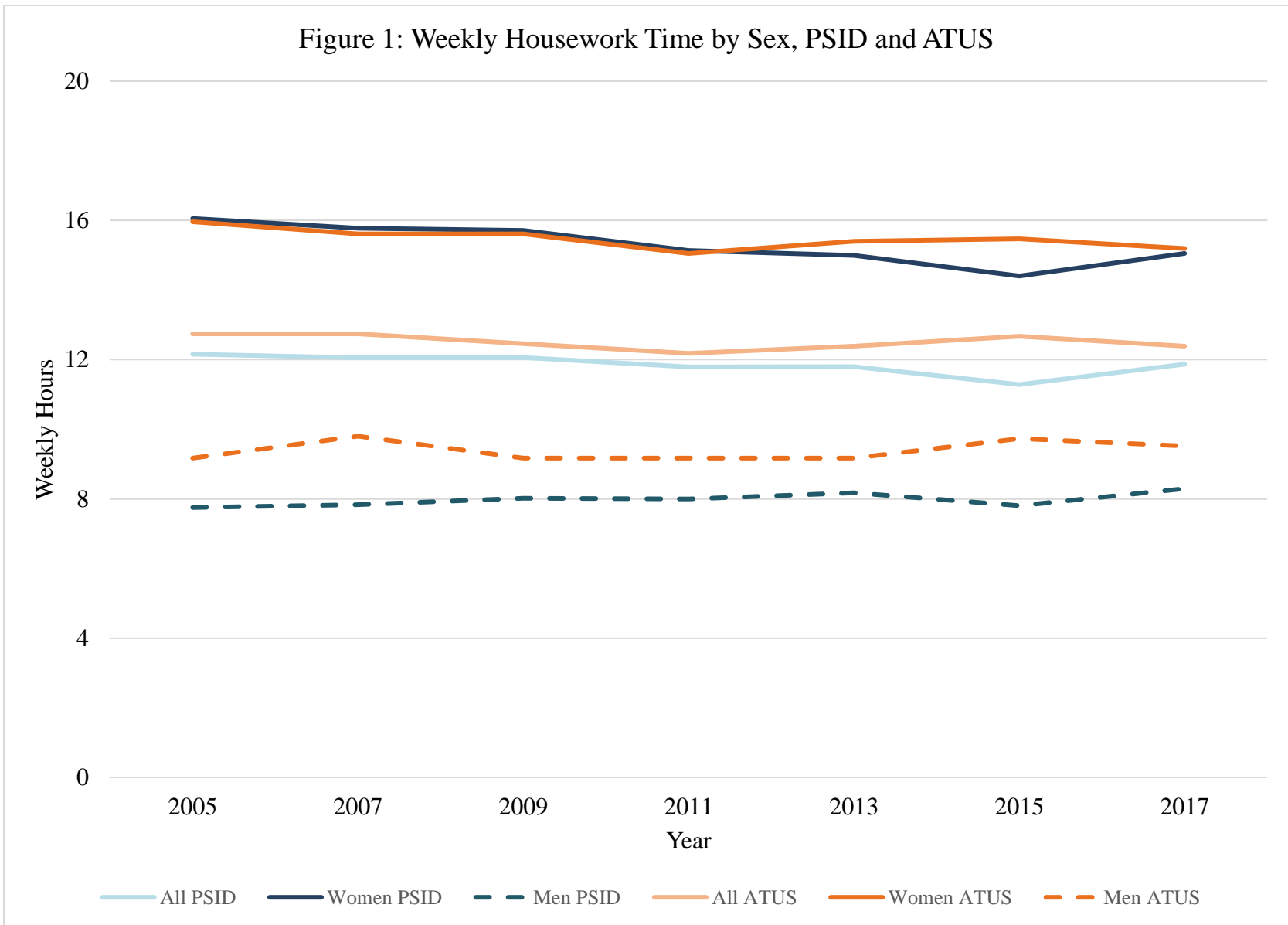


Table 2a: Weekly time spent in various activities by age and sex: 2017 Panel Study of Income Dynamics

	All					Men					Women				
	18+	18-24	25-54	55-64	65+	18+	18-24	25-54	55-64	65+	18+	18-24	25-54	55-64	65+
Household activities	11.9	10.8	11.8	12.0	12.1	8.3	7.9	8.0	8.5	9.0	15.0	13.5	15.3	15.2	14.5
Self-care	7.9	8.6	7.7	8.1	8.2	6.6	7.9	6.3	6.7	7.1	9.1	9.3	9.0	9.3	9.0
Purchasing goods and services	3.7	3.4	3.6	3.8	4.0	2.6	2.7	2.5	2.6	2.9	4.7	4.0	4.6	4.9	4.9
Child care	13.4	17.4	21.7	3.8	1.9	8.2	6.0	13.3	2.2	1.1	18.1	27.9	29.5	5.2	2.5
Adult care	1.8	0.4	1.2	2.6	2.6	1.3	0.5	1.0	1.8	1.7	2.3	0.3	1.5	3.4	3.4
Volunteering	1.2	1.0	1.1	1.2	1.6	1.1	1.2	1.0	0.9	1.4	1.3	0.8	1.2	1.4	1.6
Educational activities	1.4	6.2	1.7	0.6	0.6	1.2	6.8	1.3	0.4	0.5	1.6	5.7	2.1	0.7	0.7
Leisure and sports	17.3	16.2	14.1	18.7	23.5	17.9	17.6	14.9	19.0	24.3	16.7	14.9	13.4	18.4	22.8
Working and work related activities	26.1	30.6	34.3	26.5	6.2	31.1	33.8	39.9	31.2	8.5	21.7	27.6	29.2	22.2	4.3
Total Time	84.7	94.6	97.4	77.2	60.6	78.1	84.4	88.2	73.4	56.5	90.6	104.0	105.8	80.7	63.8

Table 2b: Weekly time spent in various activities by age and sex: 2017 American Time Use Survey

	All					Men					Women				
	18+	15-24	25-54	55-64	65+	18+	15-24	25-54	55-64	65+	18+	15-24	25-54	55-64	65+
Household activities	12.7	6.6	11.9	14.6	16.6	9.9	4.4	8.8	11.3	14.8	15.5	8.8	14.8	17.6	18.0
Self-care	5.3	5.3	5.1	6.2	5.5	4.8	4.4	4.3	4.7	4.2	6.2	6.3	5.8	7.3	6.3
Purchasing goods and services	3.2	2.5	3.0	3.3	3.9	2.6	1.8	2.2	2.8	3.4	3.8	3.4	3.6	3.7	4.3
Child care	3.4	1.4	5.3	1.3	1.1	2.2	0.8	3.4	1.0	0.6	4.4	2.0	7.1	1.5	1.3
Adult care	0.8	0.4	0.7	1.4	1.0	0.8	0.3	0.7	1.2	0.9	0.9	0.5	0.8	1.5	1.0
Volunteering	1.1	1.1	0.8	1.1	1.5	0.8	0.8	0.6	0.9	1.5	1.3	1.5	1.2	1.3	1.5
Educational activities	1.8	15.8	1.1	0.1	0.1	1.8	16.6	1.1	0.0	0.0	1.8	16.1	1.2	0.0	0.0
Leisure and sports	35.1	35.6	28.3	36.8	51.2	36.9	37.8	30.4	38.4	53.4	33.6	33.3	26.2	35.2	49.6
Working and work related activities	24.2	13.9	32.3	25.2	5.7	29.1	16.2	37.9	30.0	7.9	19.5	11.3	26.9	22.2	3.7
Total Time	87.7	82.6	88.5	90.0	86.5	88.8	83.2	89.4	90.3	86.9	86.9	83.2	87.6	90.4	85.6

Figure 2a. Weekly hours spent in various activities by sex and age, PSID

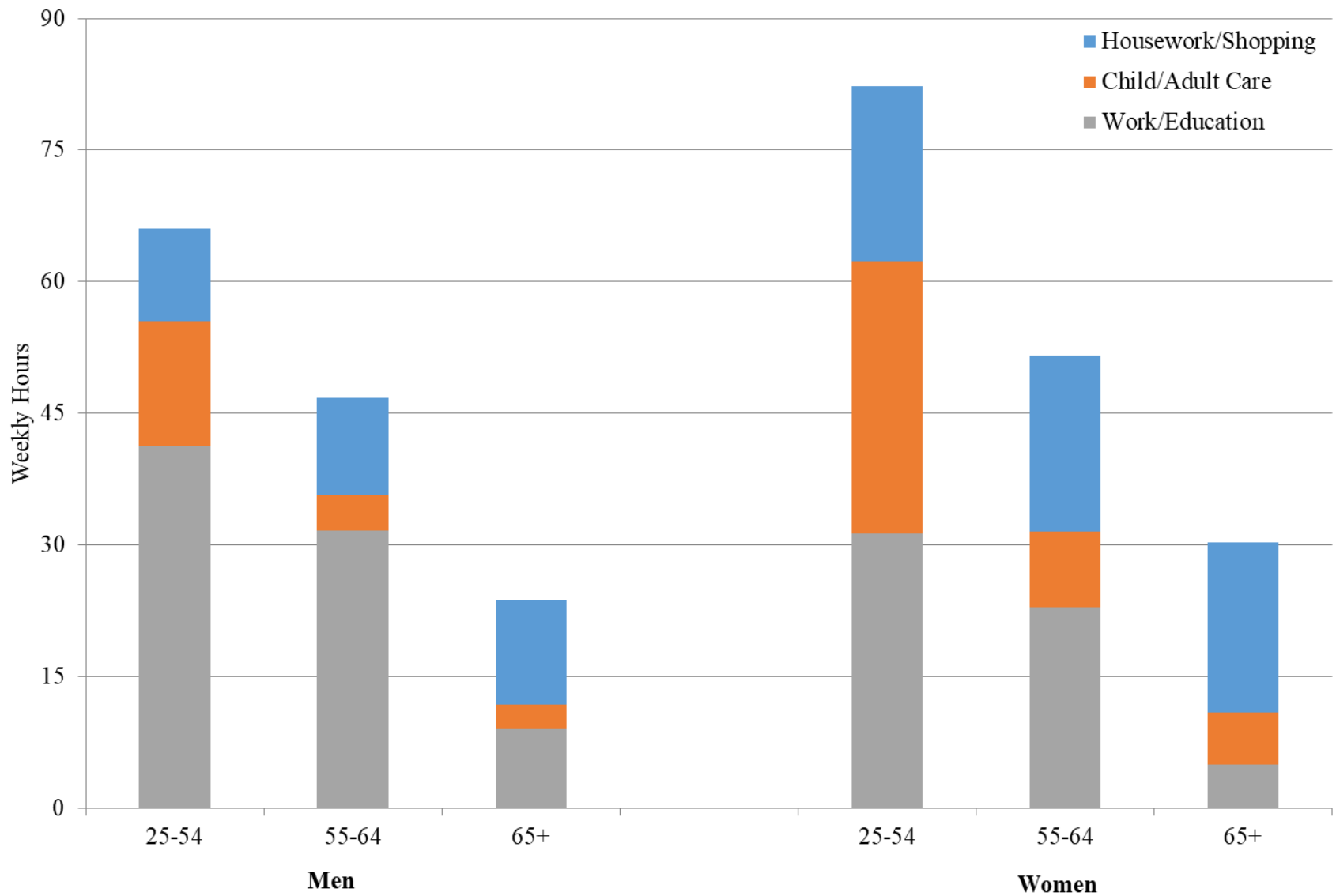


Figure 2b. Weekly hours spent in various activities by sex and age, ATUS

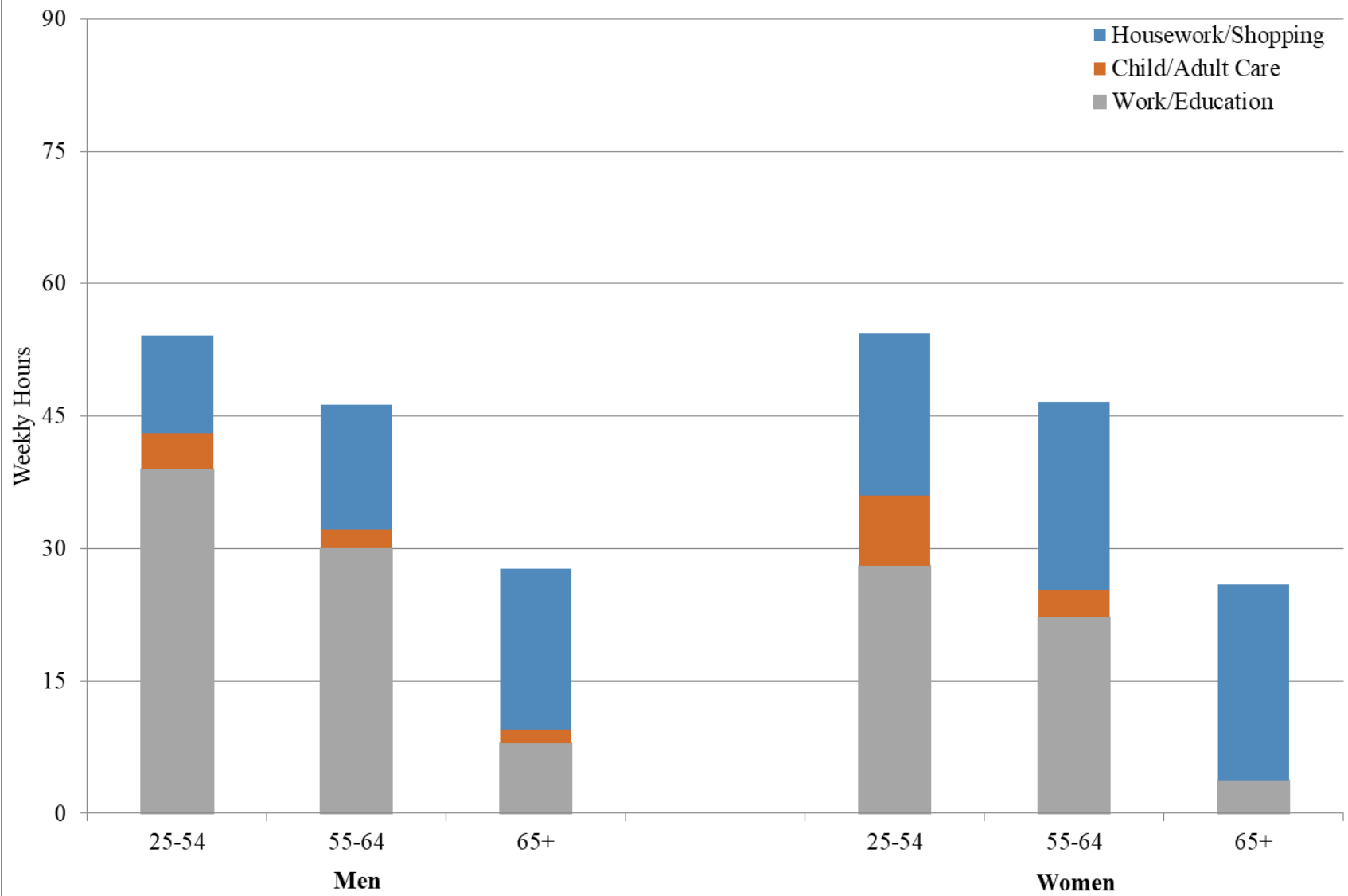




Table 3: Time spent in various activities for individuals age 55+, ATUS, HRS, and PSID (weekly hours)			
	ATUS (Time Dairy)	HRS (35 Questions)	PSID (9 Questions)
Work	15.3	13.3	15.4
Household Activities	15.8	18	12.0
Personal Care	5.9	8.5	8.1
Shopping	5.8	3.8	3.9
Child Care	1.2	2.2	2.7
Adult Care	1.2	1.4	2.6
Volunteering	1.3	0.6	1.4
Educational Activities	0.1	NA	0.6
Leisure	46.2	84.5	21.3
<b>Total Reported Time</b>	<b>92.8</b>	<b>132.3</b>	<b>68.1</b>

Table 4a: Weekly time spent in various activities by income quintile, 2017 Panel Study of Income Dynamics																									
	Quintile 1					Quintile 2					Quintile 3					Quintile 4					Quintile 5				
	18+	18-24	25-54	55-64	65+	18+	18-24	25-54	55-64	65+	18+	18-24	25-54	55-64	65+	18+	18-24	25-54	55-64	65+	18+	18-24	25-54	55-64	65+
Household	11.7	11.0	12.4	12.6	10.7	12.7	10.9	12.7	12.2	13.1	12.3	11.1	11.6	12.9	13.5	11.4	9.6	11.4	11.3	11.8	11.3	8.0	11.3	11.3	11.1
Self-Care	8.4	9.5	8.7	7.7	8.1	8.2	8.4	8.2	8.2	8.3	7.7	7.3	7.3	8.2	8.2	7.6	6.6	7.2	8.0	8.3	7.7	7.4	7.5	8.2	7.8
Shopping	3.5	3.5	3.8	3.2	3.2	3.9	3.3	3.8	4.0	4.0	3.9	3.6	3.7	3.9	4.4	3.6	2.6	3.4	3.8	4.2	3.7	3.6	3.4	4.0	4.6
Child care	12.9	17.7	24.9	4.3	1.4	14.3	16.5	24.2	3.9	2.0	14.5	18.7	22.7	5.0	2.0	13.7	19.3	20.7	2.6	2.7	11.9	5.1	17.9	3.5	1.7
Adult care	3.1	0.3	2.8	6.2	2.4	2.6	0.2	2.1	2.5	3.8	1.9	1.1	0.8	3.6	3.1	0.9	0.5	0.8	1.0	1.3	0.7	0.5	0.3	1.0	1.7
Volunteer	0.8	0.9	0.8	1.2	0.7	1.2	1.3	1.1	1.1	1.6	1.2	1.0	1.0	1.0	1.8	1.4	0.9	1.2	0.9	2.4	1.4	0.6	1.2	1.5	2.0
Education	1.6	7.2	2.0	0.4	0.4	1.7	6.3	2.3	0.5	0.4	1.3	4.3	1.6	0.6	0.7	1.3	3.7	1.6	0.7	1.0	1.1	6.0	1.3	0.7	0.9
Leisure	19.5	17.5	15.8	21.9	23.3	17.5	16.8	14.0	17.4	24.1	16.8	13.8	13.7	17.9	23.7	16.6	12.8	13.8	18.1	24.9	16.0	12.2	13.9	18.3	21.1
Work	13.1	26.5	21.6	9.3	1.6	22.3	31.0	31.4	23.5	3.9	27.9	37.5	36.2	27.7	7.1	32.2	34.4	38.2	33.0	10.1	34.3	49.5	39.4	33.8	14.3

Table 4b: Weekly time spent in various activities by consumption quintile, 2017 Panel Study of Income Dynamics

	Quintile 1					Quintile 2					Quintile 3					Quintile 4					Quintile 5				
	18+	18-24	25-54	55-64	65+	18+	18-24	25-54	55-64	65+	18+	18-24	25-54	55-64	65+	18+	18-24	25-54	55-64	65+	18+	18-24	25-54	55-64	65+
Household	10.9	10.3	11.1	11.4	10.7	11.9	11.1	11.6	12.1	12.6	12.5	12.4	12.0	12.6	13.7	12.0	10.6	11.8	12.0	13.0	12.0	7.5	12.3	11.6	11.5
Self-Care	7.9	9.6	8.3	7.3	7.7	8.1	8.2	8.1	7.9	8.2	7.9	8.8	7.3	8.3	9.2	7.8	6.9	7.5	8.4	8.3	7.8	6.8	7.7	8.3	7.7
Shopping	3.3	3.3	3.5	3.0	3.2	3.8	3.2	3.8	3.7	3.8	3.8	3.6	3.5	3.8	4.6	3.8	3.6	3.5	4.0	4.6	4.0	3.4	3.7	4.2	5.0
Child care	9.2	16.2	19.7	3.7	1.1	13.5	19.8	22.8	3.9	2.0	14.1	19.9	21.6	4.0	2.1	15.5	16.4	22.2	4.3	3.1	14.7	3.4	21.7	3.0	2.2
Adult care	3.1	0.3	3.5	4.1	2.8	2.4	0.1	1.2	4.2	3.9	1.2	1.1	1.0	1.0	2.1	1.5	0.3	0.9	2.9	2.2	0.8	0.6	0.6	1.5	0.9
Volunteer	1.0	1.0	1.0	1.2	0.9	0.9	1.2	0.8	1.0	1.2	1.3	0.4	1.2	1.0	2.1	1.1	1.8	0.9	1.1	1.9	1.6	0.6	1.5	1.5	2.9
Education	1.2	7.1	1.5	0.2	0.5	1.2	5.1	1.6	0.7	0.2	1.4	5.9	1.8	0.6	0.7	1.5	5.8	1.9	0.7	1.0	1.5	9.2	1.8	0.7	1.2
Leisure	20.4	17.6	16.6	20.7	24.2	17.1	16.6	14.4	17.3	22.4	16.5	15.0	13.4	19.1	23.1	15.9	14.5	13.4	17.8	23.6	16.4	11.7	13.9	18.8	24.1
Work	13.4	26.9	22.7	14.1	2.8	24.3	32.6	33.1	25.3	5.8	28.3	30.1	35.3	28.4	8.1	31.9	36.8	37.4	32.0	10.0	32.3	32.8	37.9	30.4	9.5

Table 4c: Weekly time spent in various activities by wealth quintile, 2017 Panel Study of Income Dynamics

	Quintile 1					Quintile 2					Quintile 3					Quintile 4					Quintile 5				
	18+	18-24	25-54	55-64	65+	18+	18-24	25-54	55-64	65+	18+	18-24	25-54	55-64	65+	18+	18-24	25-54	55-64	65+	18+	18-24	25-54	55-64	65+
Household	11.3	11.5	11.5	11.5	9.4	11.6	10.1	11.7	12.2	10.6	12.2	10.2	12.3	12.3	11.9	12.2	11.3	11.8	11.7	13.0	12.1	10.7	11.7	12.0	12.5
Self-Care	8.1	9.7	8.3	6.9	7.1	7.7	7.5	7.5	8.8	7.6	7.9	7.7	7.7	8.0	8.3	7.9	7.9	7.4	8.0	8.5	8.0	7.9	7.2	8.4	8.3
Shopping	3.5	3.6	3.6	3.0	3.4	3.7	2.9	3.7	4.2	3.7	3.6	3.9	3.6	3.5	3.4	3.8	2.8	3.5	4.0	4.2	4.0	4.1	3.5	4.0	4.3
Child care	18.6	19.4	24.3	3.0	1.0	17.5	15.0	23.0	6.2	1.2	14.6	19.2	21.4	4.6	3.1	10.4	15.5	19.6	2.5	2.4	6.4	4.7	16.8	3.4	1.4
Adult care	2.2	0.6	1.8	4.7	2.3	1.4	0.2	1.1	3.5	1.7	2.0	0.2	1.6	3.2	2.1	1.8	0.3	0.7	2.2	3.1	1.6	1.8	0.4	1.2	2.8
Volunteer	1.0	0.9	1.0	1.3	0.8	0.9	1.3	0.9	0.9	0.7	1.0	0.8	1.1	0.9	0.9	1.4	0.4	1.2	1.2	1.8	1.7	0.4	1.2	1.4	2.1
Education	2.3	6.8	2.4	0.5	0.8	1.7	5.6	1.8	0.6	0.3	1.2	5.1	1.5	0.3	0.8	0.8	3.1	1.2	0.6	0.4	0.9	14.5	1.3	0.8	0.7
Leisure	16.1	16.0	14.8	18.9	21.7	16.7	17.2	14.7	18.1	26.7	16.5	12.6	13.7	18.0	24.0	17.1	24.3	13.1	18.1	22.4	19.7	11.1	13.9	19.7	23.7
Work	26.4	28.2	30.8	19.8	5.5	29.2	33.0	33.7	25.5	6.3	28.1	34.5	36.1	26.7	5.2	25.6	29.1	36.9	30.1	5.6	21.4	21.1	36.7	27.4	7.2

	Partnered			Single		
	All	Men	Women	All	Men	Women
Work	26.9	32.1	21.7	24.4	28.7	21.4
Household Activities	12.7	8.0	17.4	10.2	8.9	11.1
Personal Care	7.8	6.4	9.3	8.1	7.1	8.8
Shopping	3.9	2.5	5.3	3.4	3.0	3.7
Child Care	15.5	9.5	21.6	9.5	5.2	12.5
Adult Care	1.9	1.1	2.7	1.7	1.7	1.7
Volunteering	1.3	1.1	1.5	1.0	1.0	1.0
Educational Activities	1.2	0.9	1.5	1.7	1.7	1.7
Leisure	16.4	17.1	15.6	19.0	19.6	18.6

		All					Men					Women				
		Never	Rarely	Sometimes	Often	Always	Never	Rarely	Sometimes	Often	Always	Never	Rarely	Sometimes	Often	Always
Outside of Work	Socially Demanding	1.2	7.0	28.9	35.8	27.1	1.4	8.4	32.4	34.2	23.6	1.0	5.8	25.8	37.2	30.2
	Physically Demanding	15.8	26.5	36.6	15.6	5.5	11.3	22.2	40.5	19.5	6.5	19.7	30.3	33.1	12.2	4.6
	Cognitively Demanding	13.3	25.0	40.0	15.4	6.4	11.8	24.7	41.4	15.7	6.3	14.7	25.2	38.7	15.1	6.4
	Time Pressure	20.2	29.4	30.3	11.3	8.7	22.6	33.7	28.4	8.6	6.7	18.2	25.6	32.0	13.7	10.6
While Working	Socially Demanding	1.5	3.4	8.4	17.9	68.9	1.6	3.8	10.1	21.4	63.1	1.3	2.9	6.5	14.2	75.2
	Physically Demanding	23.2	25.5	20.4	13.4	17.5	18.6	21.5	21.2	16.7	21.9	28.2	29.9	19.5	9.8	12.6
	Cognitively Demanding	5.0	6.5	19.8	24.0	44.7	4.3	5.8	19.6	24.9	45.5	5.8	7.2	20.1	23.0	43.9
	Time Pressure	9.5	12.4	32.7	20.5	24.9	9.5	13.2	33.3	20.1	24.0	9.6	11.6	32.1	20.8	25.9

	All					Men					Women				
	18+	18-24	25-54	55-64	65+	18+	18-24	25-54	55-64	65+	18+	18-24	25-54	55-64	65+
Child care	13.4	17.4	21.7	3.8	1.9	8.2	6.0	13.3	2.2	1.1	18.1	27.9	29.5	5.2	2.5
Children in Family Unit	37.7	71.1	38.7	16.5	14.9	23.0	38.6	24.2	9.5	5.6	49.7	83.0	50.6	24.1	24.5
No Children in Family Unit	2.0	1.1	2.2	2.4	1.5	1.6	1.2	2.4	1.4	0.9	2.3	0.9	2.0	3.3	1.9
Leisure and sports	17.3	16.2	14.1	18.7	23.5	17.9	17.6	14.9	19.0	24.3	16.7	14.9	13.4	18.4	22.8
Children in Family Unit	13.0	12.8	12.7	14.4	22.1	13.8	11.8	13.5	15.1	21.7	12.3	13.2	12.0	13.5	22.5
No Children in Family Unit	19.3	17.3	15.8	19.1	23.5	19.7	18.5	16.4	19.4	24.4	18.9	15.8	15.3	18.8	22.9

